

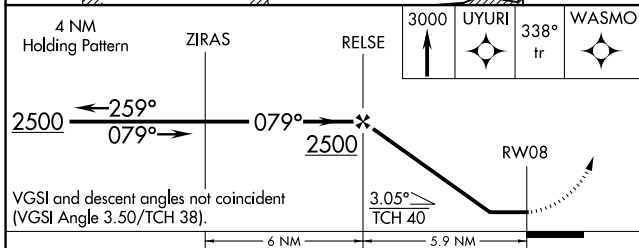
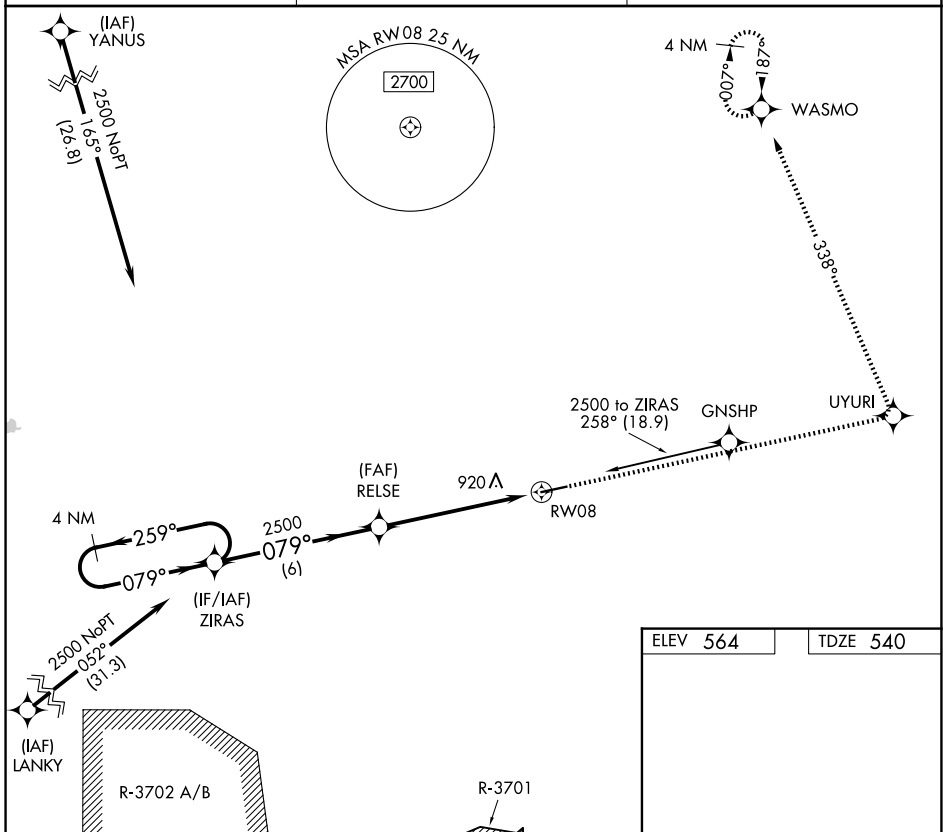
APP CRS	Rwy Ldg	5505
079°	TDZE	540
	Apt Elev	564

RNAV (GPS) RWY 8

HOPKINSVILLE-CHRISTIAN COUNTY (HVC)

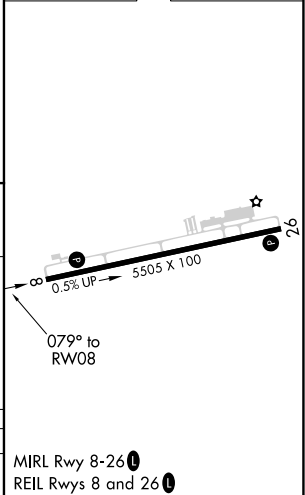
RNP APCH.	MISSED APPROACH: Climb to 3000 direct UYURI and left turn via 338° track to WASMO and hold.
<p>▼ Rwy 8 helicopter visibility reduction below 1 SM NA. When local altimeter setting not received, use Clarksville altimeter setting and increase all MDA 40 feet. Procedure NA at night.</p> <p>▲ NA</p>	

AWOS-3 132.575	CAMPBELL APP CON 118.1 269.525	UNICOM 122.8 (CTAF) 0
--------------------------	--	---------------------------------



ELEV 564	TDZE 540
----------	----------

CATEGORY	A	B	C	D
LNVA MDA	1220-1	680 (700-1)	1220-2	1220-2 1/4
			680 (700-2)	680 (700-2 1/4)



SE-1, 14 MAY 2026 to 11 JUN 2026

SE-1, 14 MAY 2026 to 11 JUN 2026