

# LURIC EIGHT DEPARTURE (RNAV)

CTAF  
122.9  
HOUSTON DEP CON  
119.7 281.4

**TOP ALTITUDE: ASSIGNED BY ATC**

NOTE: RADAR required.  
NOTE: DME/DME/IRU or GPS required.  
NOTE: RNAV 1.

### TAKEOFF MINIMUMS

Rwys 16, 34: Standard with minimum  
climb of 500' per NM to 580.

### DEPARTURE ROUTE DESCRIPTION

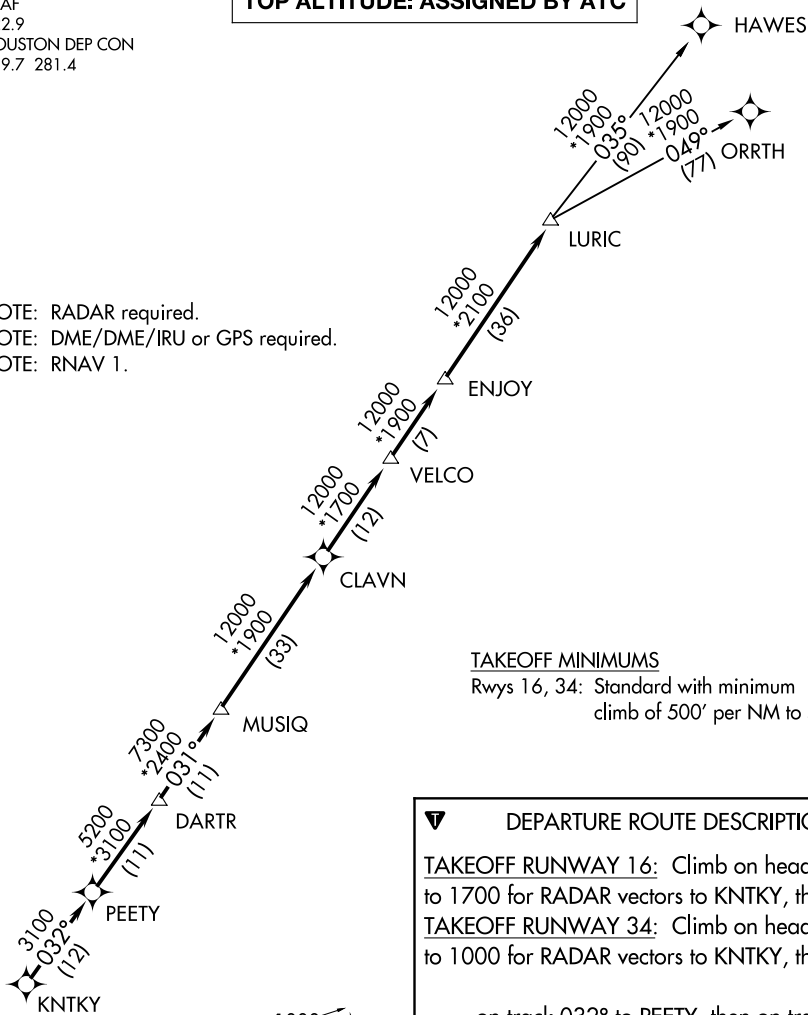
TAKEOFF RUNWAY 16: Climb on heading 161°  
to 1700 for RADAR vectors to KNTKY, then...

TAKEOFF RUNWAY 34: Climb on heading 341°  
to 1000 for RADAR vectors to KNTKY, then...

... on track 032° to PEETY, then on track  
032° to DARTR, then on track 031° to MUSIQ,  
then on track 031° to CLAVN, then on track  
031° to VELCO, then on track 031° to ENJOY,  
then on track 031° to LURIC, then on  
(transition). Maintain ATC assigned altitude.  
Expect filed altitude 10 minutes after departure.

HAWES TRANSITION (LURIC8.HAWES)

ORRTH TRANSITION (LURIC8.ORRTH)



NOTE: Chart not to scale.