

# WYLSN EIGHT DEPARTURE (RNAV)

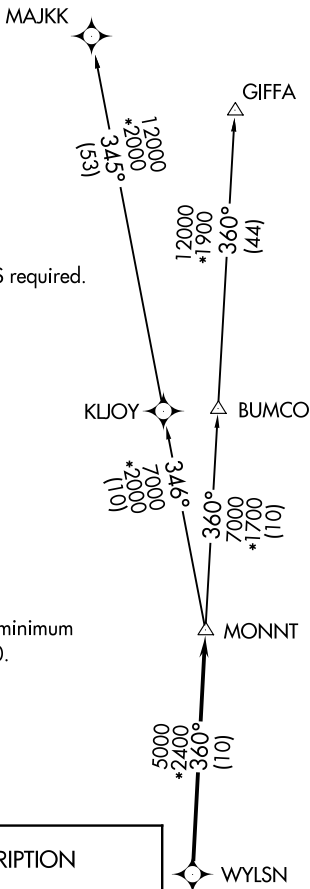
CTAF  
122.9  
HOUSTON DEP CON  
119.7 281.4

**TOP ALTITUDE:  
ASSIGNED BY ATC**

NOTE: RADAR required.  
NOTE: DME/DME/IRU or GPS required.  
NOTE: RNAV 1.

### TAKEOFF MINIMUMS

Rwy 16, 34: Standard with minimum  
climb of 500' per NM to 580.



### DEPARTURE ROUTE DESCRIPTION

TAKEOFF RUNWAY 16: Climb on heading 161° to 1700 for RADAR vectors to WYLSN, then...

TAKEOFF RUNWAY 34: Climb on heading 341° to 1000 for RADAR vectors to WYLSN, then...

...on track 360° to MONNT, then on (transition). Maintain ATC assigned altitude. Expect filed altitude 10 minutes after departure.

GIFFA TRANSITION (WYLSN8.GIFFA)

MAJKK TRANSITION (WYLSN8.MAJKK)



NOTE: Chart not to scale.

# WYLSN EIGHT DEPARTURE (RNAV)