

LOC/DME I-AIK 109.9 Chan 36	APP CRS 066°	Rwy Ldg 5500 TDZE 515 Apt Elev 529
---	------------------------	---

ILS or LOC/DME RWY 7

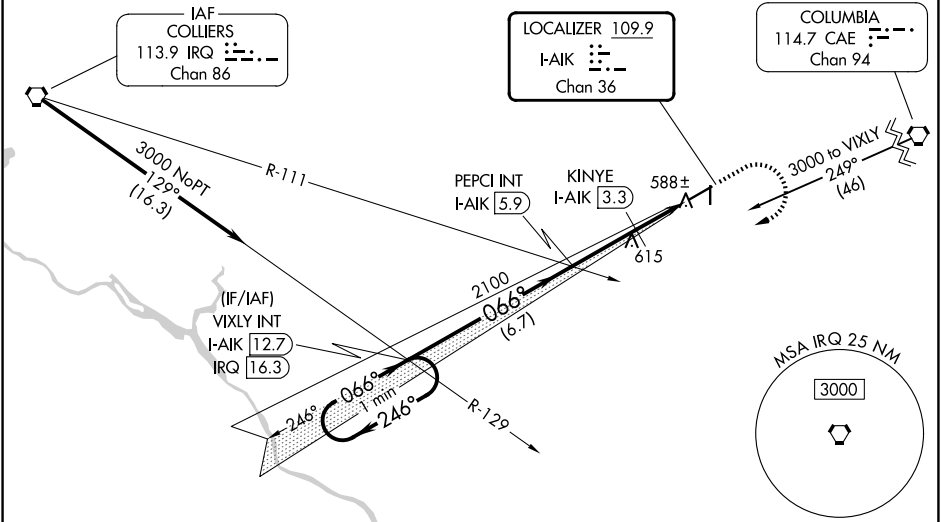
AIKEN RGNL (AIK)

V VDP NA with Augusta Rgnl at Bush Fld altimeter setting. When local altimeter setting not received, use Augusta Rgnl at Bush Fld altimeter setting; increase S-ILS 7 all Cats DAs to 819 feet and all Cats visibility 1/4 SM; increase all MDAs 120 feet and S-LOC 7 Cats C/D visibility 3/8 SM and Circling Cat C visibility 1/4 SM. Circling Rwy 1, 19 NA at night.

MISSED APPROACH: Climb to 1100 then climbing right turn to 3000 on heading 276° and I-AIK SW course (246°) to VIXLY INT/I-AIK 12.7 DME and hold.

AWOS-3PT 118.025	AUGUSTA APP CON* 119.15 284.625	UNICOM 122.8 (CTAF)
----------------------------	---	-------------------------------

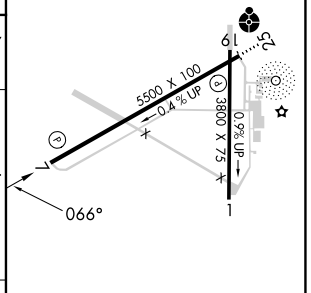
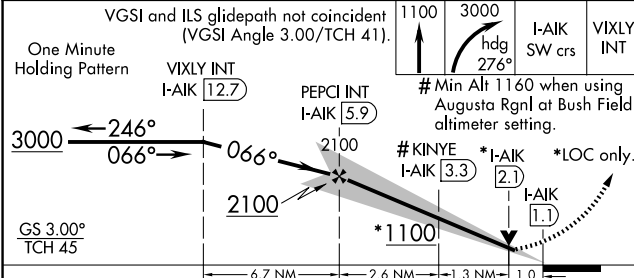
Procedure NA for arrivals on IRQ VORTAC airway radials 084 CW 174.



SE-2, 14 MAY 2026 to 11 JUN 2026

SE-2, 14 MAY 2026 to 11 JUN 2026

ELEV 529	TDZE 515
----------	----------



CATEGORY	A	B	C	D
S-ILS 7		715-3/4	200 (200-3/4)	
S-LOC 7		880-1	365 (400-1)	
CIRCLING	980-1 451 (500-1)	1000-1 471 (500-1)	1140-1 3/4 611 (700-1 3/4)	1420-3 891 (900-3)

REIL Rwy 25
MIRL Rwy 7-25