

APP CRS	Rwy Ldg	4000
163°	TDZE	746
	Apt Elev	746

RNAV (GPS) RWY 16

SHERMAN MUNI (SWI)

RNP APCH

Use Sherman/Denison altimeter setting, if not received use Dallas Love Fld altimeter setting and increase all MDA 140 feet and increase LNAV visibility Cat B ¼ SM, Cat C ½ SM, and increase Circling visibility Cats A/B ¼ SM, Cat C ½ SM. Procedure NA at night. Rwy 16 helicopter visibility reduction below 1 SM NA.

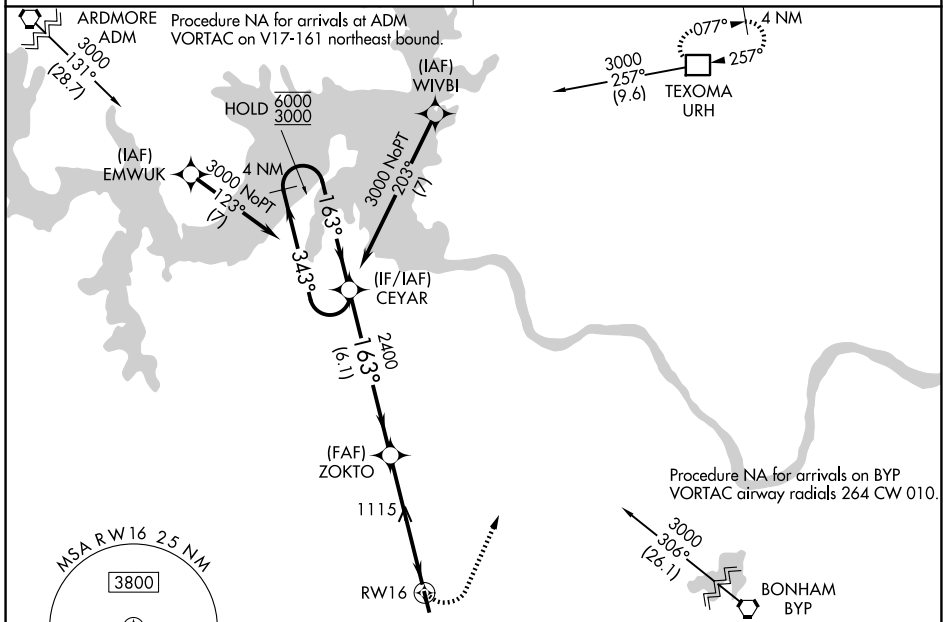
MISSED APPROACH:
Climbing left turn to 3000 direct URH DME and hold.

FORT WORTH CENTER

124.75 323.0

UNICOM

122.8 (CTAF) 0



SC-2, 14 MAY 2026 to 11 JUN 2026

SC-2, 14 MAY 2026 to 11 JUN 2026

ELEV 746		TDZE 746	
4 NM Holding Pattern		CEYAR	ZOKTO
6000	← 343°		
3000	→ 163°		
		2400	
		3.00° TCH 45	
			RWY 16
		6.1 NM	5.1 NM
CATEGORY	A	B	C
LNAV MDA	1440-1	694 (700-1)	1440-2 694 (700-2)
CIRCLING	1440-1	694 (700-1)	1620-2½ 874 (900-2½)
			NA