

VORTAC BYP 114.6 Chan 93	APP CRS 280°	Rwy Ldg TDZE Apt Elev	N/A N/A 746
--	------------------------	-----------------------------	--

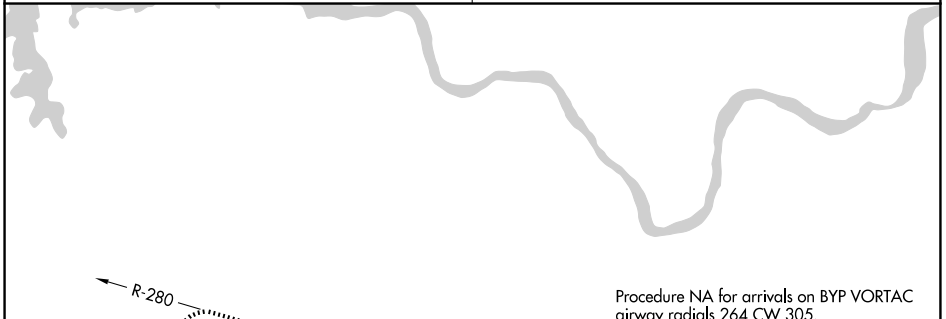
VOR/DME-A
SHERMAN MUNI (SWI)

Use Sherman/Denison altimeter setting, when not received, use Dallas Love Fld altimeter setting and increase all MDA 140 feet, increase visibility Cat B ¼ mile, Cat C ½ mile, and Cat D ¾ mile. Procedure NA at night. Helicopter visibility reduction below 1 SM NA.

MISSED APPROACH: Climb to 2300, then climbing left turn to 2400 on BYP R-280 to TEREY/13.2 DME and hold.

FORT WORTH CENTER
124.75 323.0

UNICOM
122.8 (CTAF) 0

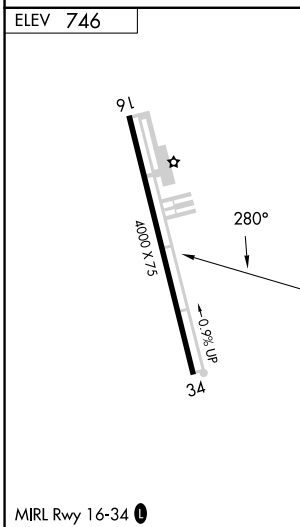


Procedure NA for arrivals on BYP VORTAC airway radials 264 CW 305.

IF/IAF
BONHAM
114.6 BYP Chan 93

SC-2, 14 MAY 2026 to 11 JUN 2026

SC-2, 14 MAY 2026 to 11 JUN 2026



	2300	2400	TEREY BYP 13.2	TEREY BYP 13.2	BYP VORTAC
	↑	← BYP R-280			
			ZERIT BYP 18.2	2300	2300
				← 280°	
CATEGORY	A	B	C	D	
CIRCLING	1300-1 554 (600-1)	1420-1 674 (700-1)	1620-2½ 874 (900-2½)	1620-2¾ 874 (900-2¾)	

