

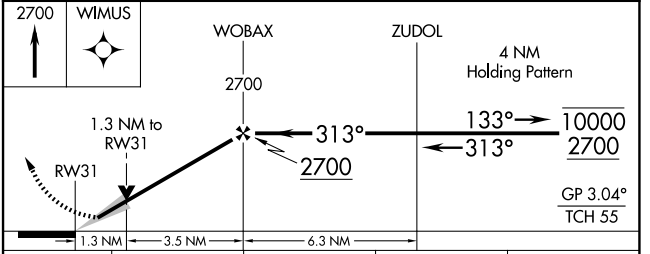
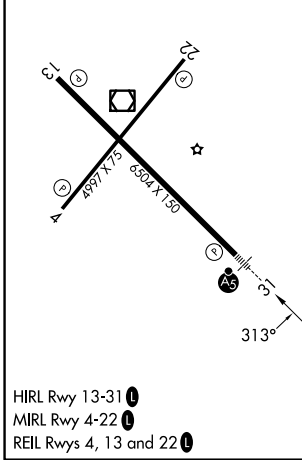
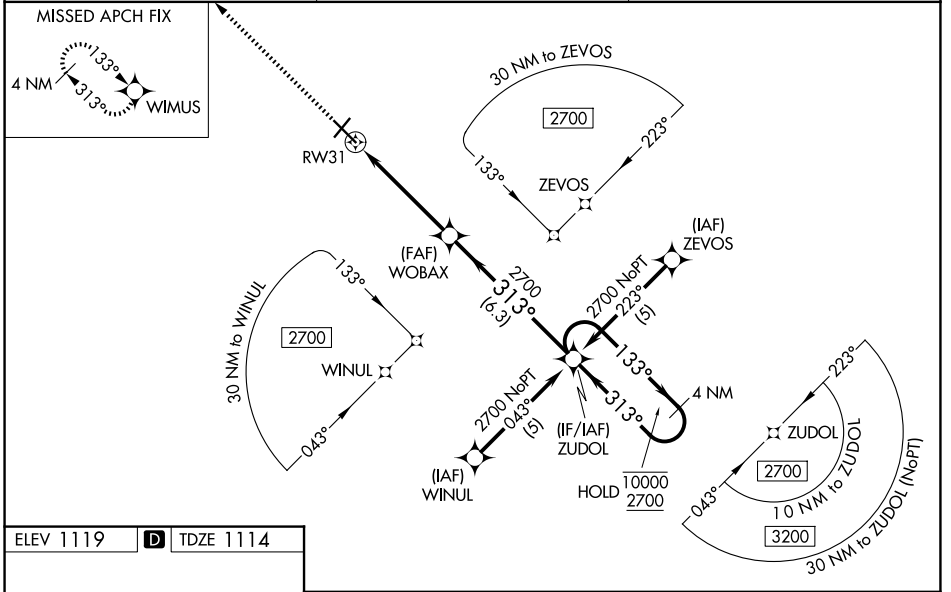
WAAS CH 69311 W31A	APP CRS 313°	Rwy Ldg TDZE 1114 Apt Elev 1119	6304
--	------------------------	---	-------------

RNAV (GPS) RWY 31

THIEF RIVER FALLS RGNL (TVF)

RNP APCH - GPS.		MALSR 	MISSED APPROACH: Climb to 2700 direct WIMUS and hold.
Baro-VNAV and VDP NA when using CKN altimeter setting. For uncompensated Baro-VNAV systems, LNAV/VNAV NA below -17°C or above 54°C. When local altimeter setting not received, use CKN altimeter setting: increase LPV DA to 1447 feet; increase LNAV/VNAV DA to 1569 feet and all visibilities ½ SM; increase all MDAs 100 feet and visibility Cats C and D ¼ SM. For inop ALS, increase LNAV/VNAV all Cats visibility to 1 SM and LNAV Cats C/D visibility to 1 ⅓ SM.			

AWOS-3PT 119.025	MINNEAPOLIS CENTER 132.15 269.6	UNICOM 122.8 (CTAF) 0
----------------------------	---	---------------------------------



CATEGORY	A	B	C	D
LPV DA	1364-½		250 (300-½)	
LNAV/VNAV DA	1486-⅝		372 (400-⅝)	
LNAV MDA	1580-½	466 (500-½)	1580-1	466 (500-1)
CIRCLING	1580-1	461 (500-1)	1820-2 701 (800-2)	1980-2¾ 861 (900-2¾)

NC-1, 14 MAY 2026 to 11 JUN 2026

NC-1, 14 MAY 2026 to 11 JUN 2026