

LOC/DME I-ANE 111.15 Chan 48 (Y)	APP CRS 269°	Rwy Ldg 5000 TDZE 910 Apt Elev 912
--	------------------------	---

ILS or LOC RWY 27

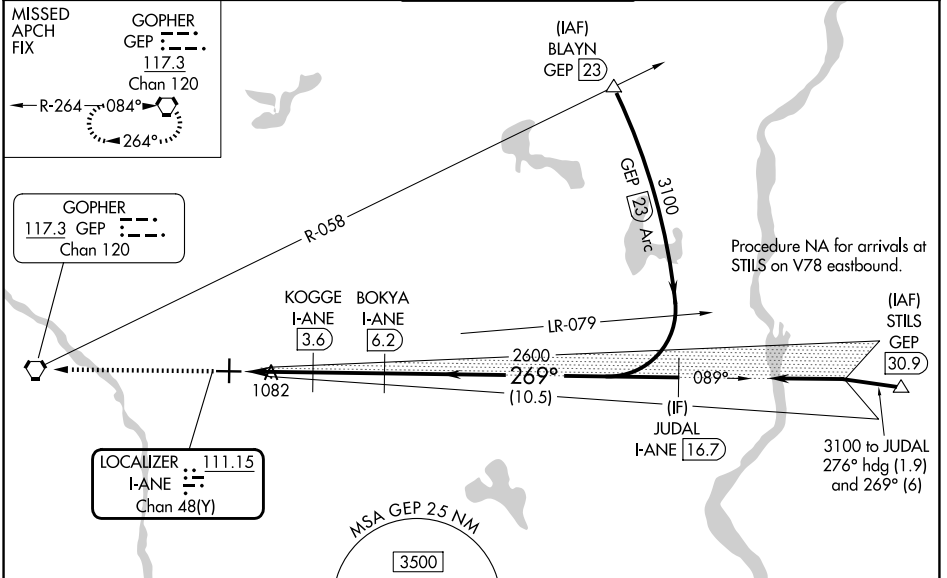
ANOKA COUNTY/BLAINE (JANES FLD) (ANE)

DME required. RADAR required for procedure entry at BLAYN.

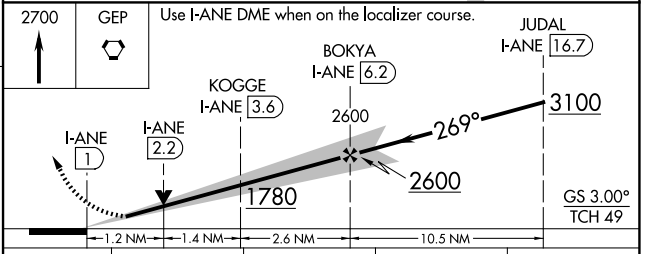
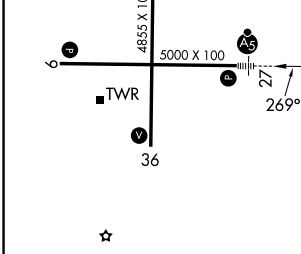
⚠ YDP NA when using Crystal altimeter setting. When local altimeter setting not received, use Crystal altimeter setting and increase S-ILS 27 DA to 1131 feet; increase all MDAs 40 feet and S-LOC 27 visibility Cat C/D ¼ SM, and Circling visibility Cat D ¼ SM. For inop ALS when using Crystal altimeter setting, increase S-LOC 27 Cat C/D visibility to 1 ¾ SM.

MALSR MISSED APPROACH: Climb to 2700 direct GEP VORTAC and hold, continue climb-in-hold to 2700.

ATIS 120.625	MINNEAPOLIS APP CON 126.5 335.65	ANOKA TOWER* 132.4 (CTAF) 0	GND CON 121.85	UNICOM 122.95
------------------------	--	---------------------------------------	--------------------------	-------------------------



ELEV 912	TDZE 910
----------	----------



CATEGORY	A	B	C	D
S-ILS 27	1110-½ 200 (200-½)			
S-LOC 27	1340-½	430 (500-½)	1340-¾	430 (500-¾)
CIRCLING	1400-1	488 (500-1)	1420-1½ 508 (600-1½)	1580-2 668 (700-2)

MINNEAPOLIS, MINNESOTA
Amdt 1 08SEP22

ANOKA COUNTY/BLAINE (JANES FLD) (ANE)
ILS or LOC RWY 27
45°09'N-93°13'W

NC-1, 14 MAY 2026 to 11 JUN 2026

NC-1, 14 MAY 2026 to 11 JUN 2026