

(ORSKY3.ORSKY) 23334
ORSKY THREE DEPARTURE

ANOKA COUNTY/BLAINE (JANES FLD) (ANE)
 AL-5202 (FAA) MINNEAPOLIS, MINNESOTA

MINNEAPOLIS DEP CON
 126.5 335.65
 ATIS
 120.625
 CLNC DEL
 121.3
 CLNC DEL
 121.85 (when twr closed)
 ANOKA TOWER ★
 132.4

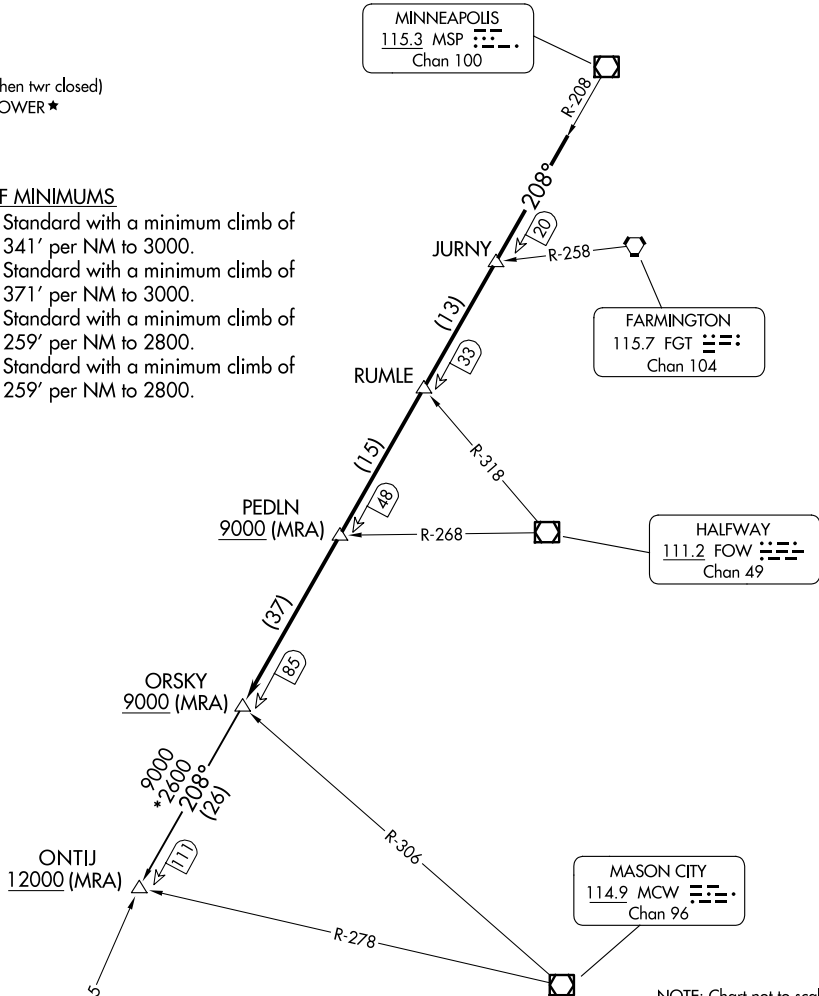
**TOP ALTITUDE:
 ASSIGNED BY ATC**



RADAR required.

TAKEOFF MINIMUMS

- Rwy 9: Standard with a minimum climb of 341' per NM to 3000.
- Rwy 18: Standard with a minimum climb of 371' per NM to 3000.
- Rwy 27: Standard with a minimum climb of 259' per NM to 2800.
- Rwy 36: Standard with a minimum climb of 259' per NM to 2800.



NC-1, 14 MAY 2026 to 11 JUN 2026

NC-1, 14 MAY 2026 to 11 JUN 2026

DEPARTURE ROUTE DESCRIPTION

TAKEOFF ALL RUNWAYS: Climb on assigned heading for RADAR vectors to assigned fix on MSP R-208, then on depicted route to ORSKY, then on transition. Maintain ATC assigned altitude. Expect filed altitude 10 minutes after departure.

ONTIJ TRANSITION (ORSKY3.ONTIJ): From over ORSKY INT on MSP R-208 to ONTIJ INT.

(ORSKY3.ORSKY) 08SEP22
ORSKY THREE DEPARTURE

MINNEAPOLIS, MINNESOTA
 ANOKA COUNTY/BLAINE (JANES FLD) (ANE)