

APP CRS	Rwy Ldg	4855
179°	TDZE	912
	Apt Elev	912

RNAV (GPS) RWY 18

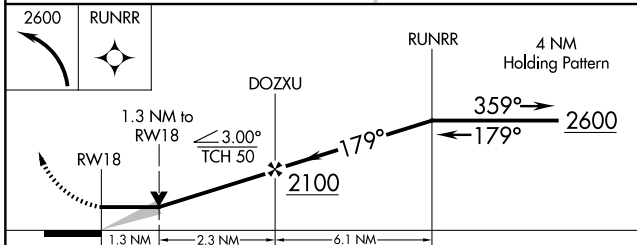
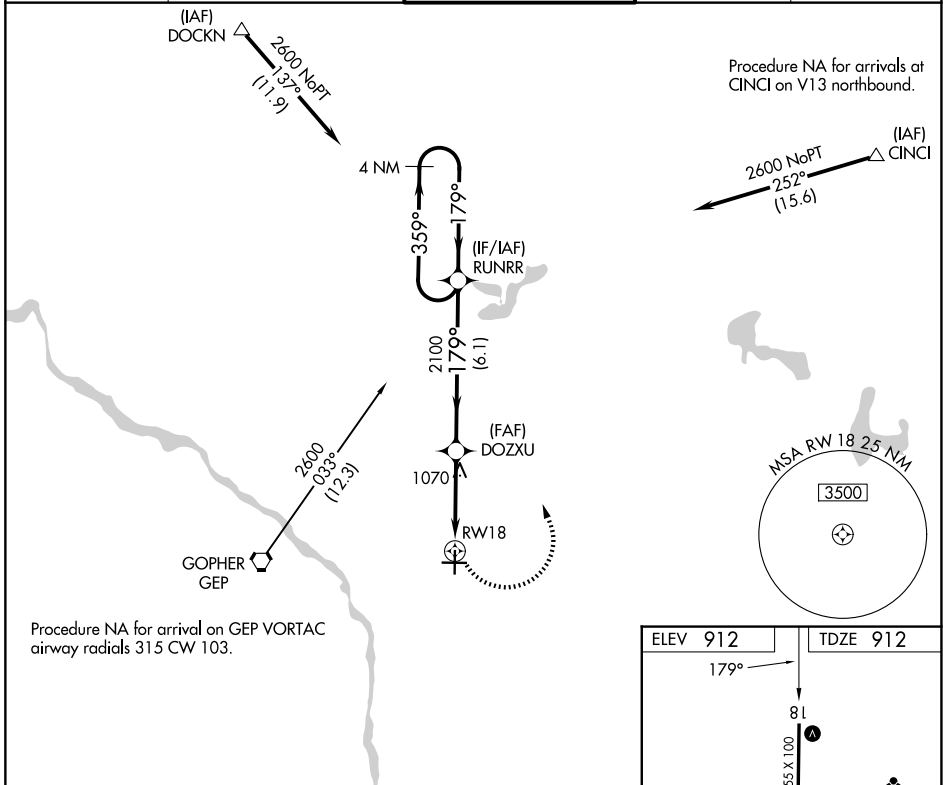
ANOKA COUNTY/BLAINE (JANES FLD) (A.N.E.)

RNP APCH - GPS.

▼ When local altimeter setting not received, use Crystal altimeter setting and increase all MDA 40 feet and Circling Cat D visibility ¼ SM. VDP NA when using Crystal altimeter setting.

MISSED APPROACH: Climbing left turn to 2600 direct RUNRR and hold.

ATIS 120.625	MINNEAPOLIS APP CON 126.5 335.65	ANOKA TOWER★ 132.4 (CTAF) 0	GND CON 121.85	UNICOM 122.95
------------------------	--	---------------------------------------	--------------------------	-------------------------



ELEV 912	TDZE 912
179°	

81

4855 X 100

5000 X 100

6

TWR

36

27

★

HIRL Rwy 9-27 0

MIRL Rwy 18-36 0

REIL Rws 9, 18 and 36 0

CATEGORY	A	B	C	D
LNNAV MDA	1380-1 468 (500-1)		1380-1⅓ 468 (500-1⅓)	
CIRCLING	1400-1 488 (500-1)		1460-1½ 548 (600-1½)	1580-2 668 (700-2)

NC-1, 14 MAY 2026 to 11 JUN 2026

NC-1, 14 MAY 2026 to 11 JUN 2026