


WAAS CH <b>78300</b> <b>W27A</b>	APP CRS <b>269°</b>	Rwy Ldg <b>5000</b> TDZE <b>910</b> Apt Elev <b>912</b>
--	------------------------	---

# RNAV (GPS) RWY 27

ANOKA COUNTY/BLAINE (JANES FLD) (A.N.E.)

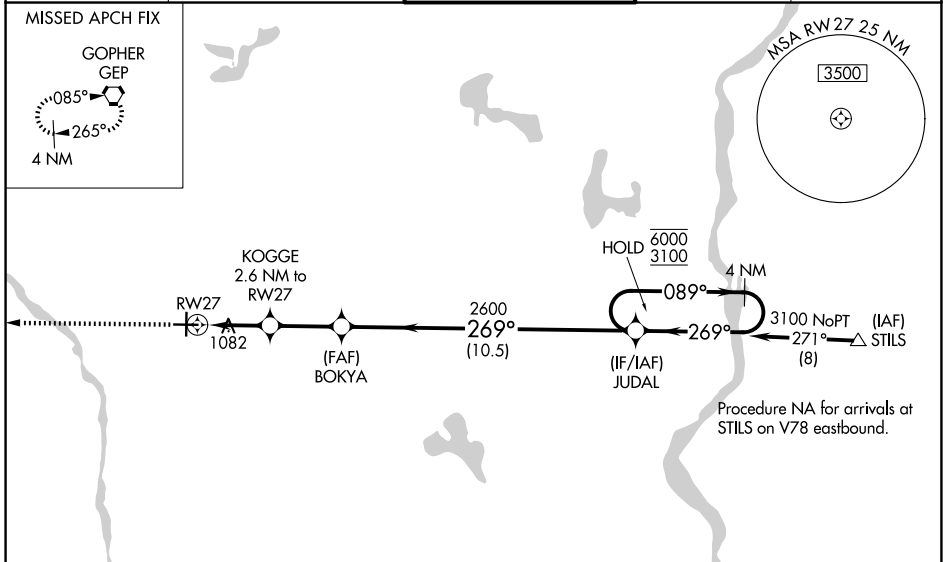
RNP APCH - GPS.

▼ For uncompensated Baro-VNAV systems, LNAV/VNAV NA below -16°C or above 54°C. When local altimeter setting not received, use Crystal altimeter setting: increase LPV DA to 1131 feet; increase LNAV/VNAV DA to 1361 feet and all visibilities ½ SM, increase all MDA 40 feet and visibility Cat C/D ¼ SM, and Circling visibility Cat D ¼ SM. Baro-VNAV and VDP NA when using Crystal altimeter setting. For inop ALS when using Crystal altimeter setting, increase LNAV Cat C/D visibility to 1 ½ SM.

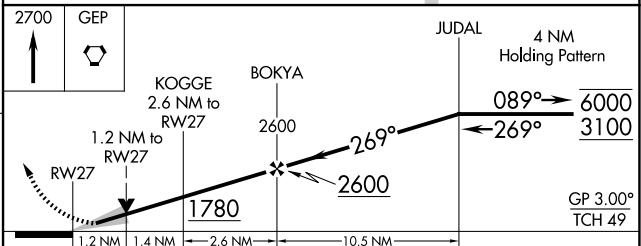
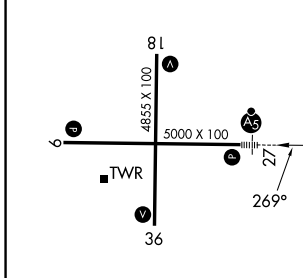
MALSR 

MISSED APPROACH: Climb to 2700 direct GEP VORTAC and hold, continue climb-in-hold to 2700.

ATIS <b>120.625</b>	MINNEAPOLIS APP CON <b>126.5 335.65</b>	ANOKA TOWER* <b>132.4 (CTAF) 0</b>	GND CON <b>121.85</b>	UNICOM <b>122.95</b>
------------------------	--	---------------------------------------	--------------------------	-------------------------



ELEV <b>912</b>	TDZE <b>910</b>
-----------------	-----------------



CATEGORY	A	B	C	D
LPV DA		1110-½	200 (200-½)	
LNAV/VNAV DA		1340-¾	430 (500-¾)	
LNAV MDA	1340-½	430 (500-½)	1340-¾	430 (500-¾)
CIRCLING	1400-1	488 (500-1)	1420-1½ 508 (600-1½)	1580-2 668 (700-2)

MINNEAPOLIS, MINNESOTA  
Amdt 1 08SEP22

ANOKA COUNTY/BLAINE (JANES FLD) (A.N.E.)  
45°09'N-93°13'W  
**RNAV (GPS) RWY 27**

NC-1, 14 MAY 2026 to 11 JUN 2026

NC-1, 14 MAY 2026 to 11 JUN 2026