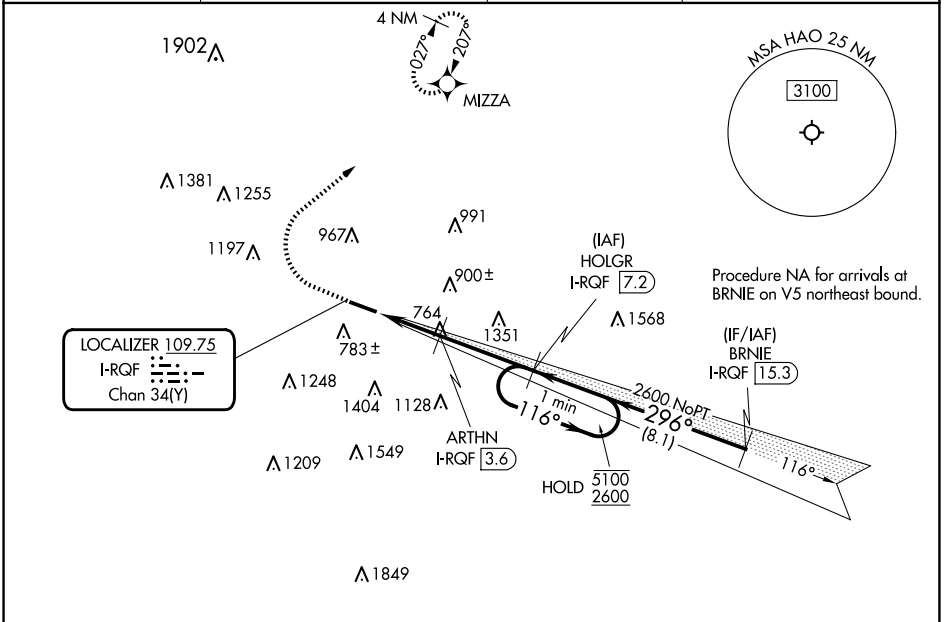


LOC/DME I-RQF 109.75 Chan 34 (Y)	APP CRS 296°	Rwy Idg TDZE Apt Elev	5500 619 632
--	------------------------	-----------------------------	---

ILS or LOC RWY 30

BUTLER COUNTY RGNL/HOGAN FLD (HAO)

RNP APCH - GPS DME required.		MALS	MISSED APPROACH: Climb to 1600 then climbing right turn to 2600 direct MIZZA and hold.
Inop table does not apply to S-ILS 30. 			
ASOS 121.425	CINCINNATI APP CON 121.0 254.25	CLNC DEL 126.25	UNICOM 123.05 (CTAF)



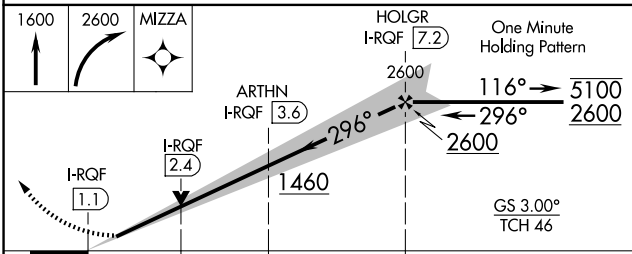
EC-2, 14 MAY 2026 to 11 JUN 2026

EC-2, 14 MAY 2026 to 11 JUN 2026

ELEV 632	TDZE 619
----------	----------

Detailed approach diagram showing altitudes (1600, 2600, 5100, 2600), distances (1.3 NM, 1.2 NM, 3.6 NM), and angles (116°, 296°, 2600). Includes symbols for MIZZA, ARTHN I-RQF (3.6), HOLGR I-RQF (7.2), and a One Minute Holding Pattern.

MIRL Rwy 12-30
REIL Rwys 12 and 30
FAT to MAP 6.1 NM
Knots: 60, 90, 120, 150, 180
Min:Sec: 6:06, 4:04, 3:03, 2:26, 2:02



CATEGORY	A	B	C	D
S-ILS 30		819-3/4	200 (200-3/4)	
S-LOC 30	1080-3/4	461 (500-3/4)	1080-1/8	461 (500-1/8)
CIRCLING	1280-1	648 (700-1)	1300-1 3/4 668 (700-1 3/4)	1760-3 1128 (1200-3)