

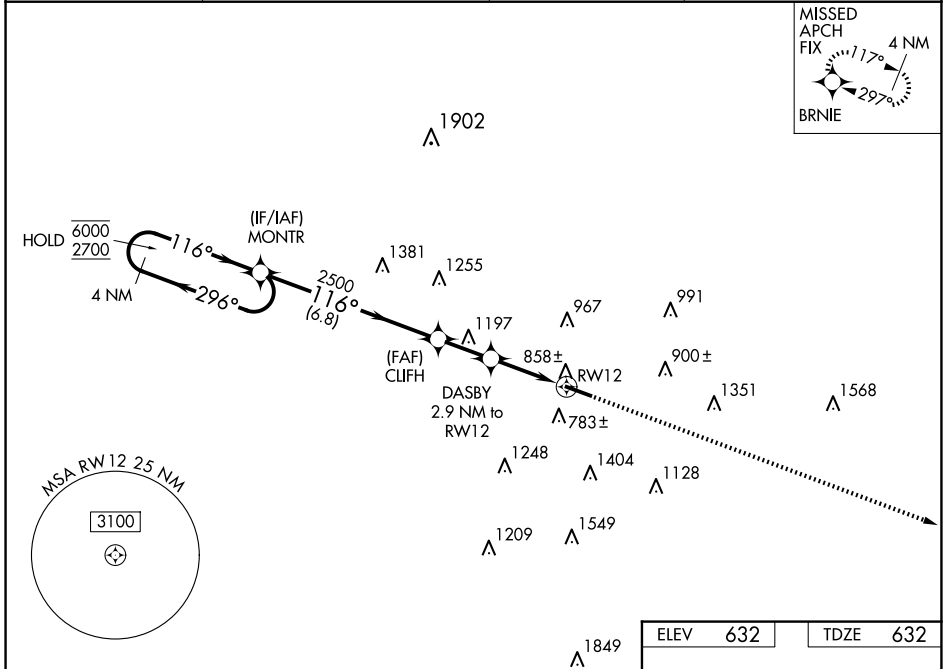
WAAS CH 56600 W12A	APP CRS 116°	Rwy Idg TDZE Apt Elev	5500 632 632
--	------------------------	-----------------------------	---

RNAV (GPS) RWY 12

BUTLER COUNTY RGNL/HOGAN FLD (HAO)

RNP APCH - GPS.			MISSED APPROACH: Climb to 3000 direct BRNIE and hold.
<p>▽ Rwy 12 helicopter visibility reduction below $\frac{3}{4}$ SM NA.</p> <p>▲ For uncompensated Baro-VNAV systems, LNAV/VNAV NA below -18°C or above 49°C.</p>			

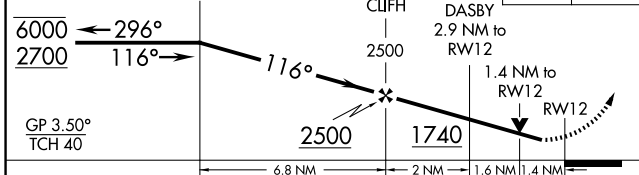
ASOS 121.425	CINCINNATI APP CON 121.0 254.25	CLNC DEL 126.25	UNICOM 123.05 (CTAF) 0
------------------------	---	---------------------------	----------------------------------



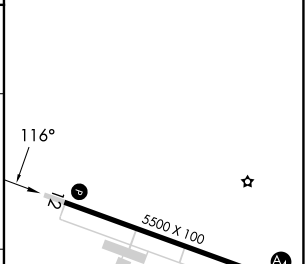
EC-2, 14 MAY 2026 to 11 JUN 2026

EC-2, 14 MAY 2026 to 11 JUN 2026

4 NM Holding Pattern	VGSI and RNAV glidepath not coincident (VGSI Angle 3.50/TCH 27).	3000	BRNIE
----------------------	--	------	-------



ELEV 632	TDZE 632
----------	----------



CATEGORY	A	B	C	D
LPV DA		1020-1 $\frac{1}{8}$	388 (400-1 $\frac{1}{8}$)	
LNAV/VNAV DA		1108-1 $\frac{3}{8}$	476 (500-1 $\frac{3}{8}$)	
LNAV MDA	1160-1	528 (600-1)	1160-1 $\frac{1}{2}$	528 (600-1 $\frac{1}{2}$)
CIRCLING	1280-1	648 (700-1)	1300-1 $\frac{3}{4}$ 668 (700-1 $\frac{3}{4}$)	1760-3 1128 (1200-3)

MIRA Rwy 12-30 0	REIL Rwy 12 and 30 0
------------------	----------------------