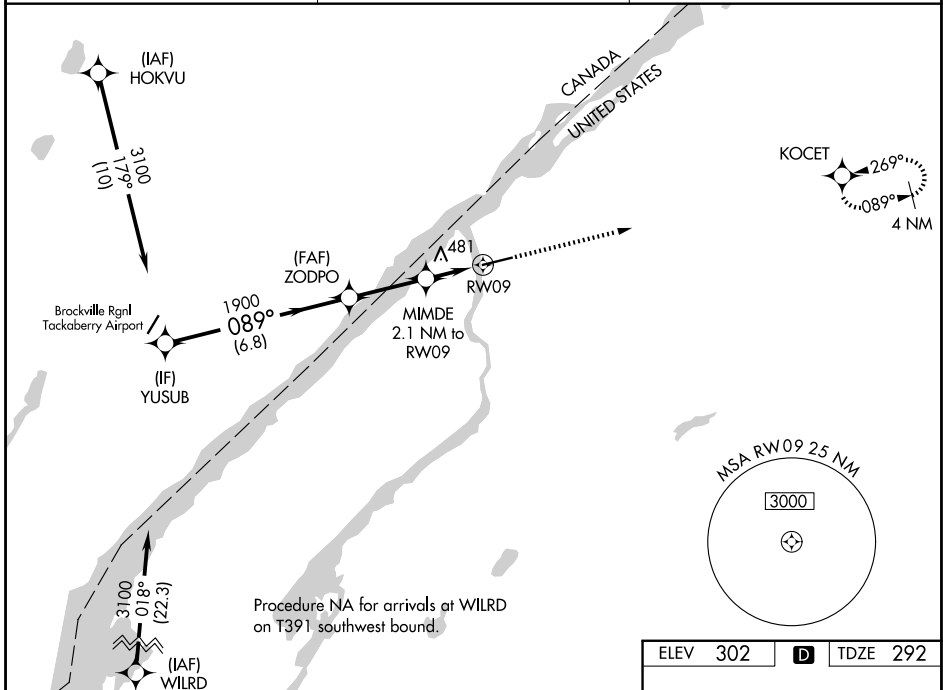


| | | |
|--|------------------------|---|
| WAAS CH 69528 W09A | APP CRS 089° | Rwy Ldg 6006 TDZE 292 Apt Elev 302 |
|--|------------------------|---|

RNAV (GPS) RWY 9

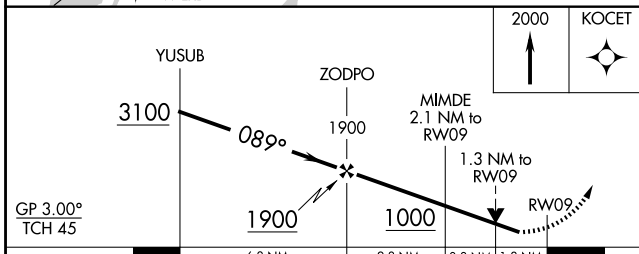
OGDENSBURG INTL (OGS)

| | | |
|---|--------------------------------------|---|
| RNP APCH - GPS. | | MISSED APPROACH: Climb to 2000 direct KOCET and hold. |
| <p>▽ Rwy 9 helicopter visibility reduction below 3/4 SM NA. For uncompensated Baro-VNAV systems, LNAV/VNAV NA below -15°C or above 54°C.</p> | | |
| AWOS-3 118,525 | BOSTON CENTER 135.25 377.1 | UNICOM 122.8 (CTAF) 0 |



NE-2, 14 MAY 2026 to 11 JUN 2026

NE-2, 14 MAY 2026 to 11 JUN 2026



| | | | | |
|----------------------------|----------------------|-----------------------|-----------------------|-----------------------------|
| ELEV 302 | D | TDZE 292 | | |
| <p>GP 3.00° TCH 45</p> | | | | |
| CATEGORY | A | B | C | D |
| LPV DA | 543-3/4 | | 251 (300-3/4) | |
| LNAV/VNAV DA | 781-13/8 | | 489 (500-13/8) | |
| LNAV MDA | 740-1 | 448 (500-1) | 740-13/8 | 448 (500-13/8) |
| CIRCLING | 760-1 458 (500-1) | 1000-1 698 (700-1) | 1000-2 698 (700-2) | 1000-21/4 698 (700-21/4) |
| HIRL Rwy 9-27 0 | | | | |