

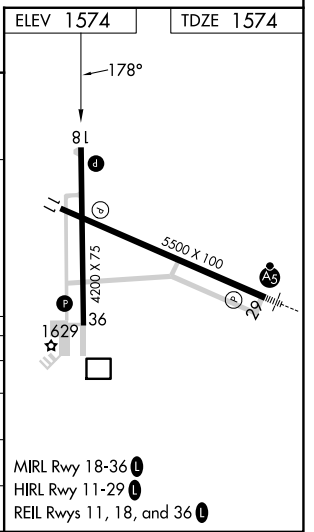
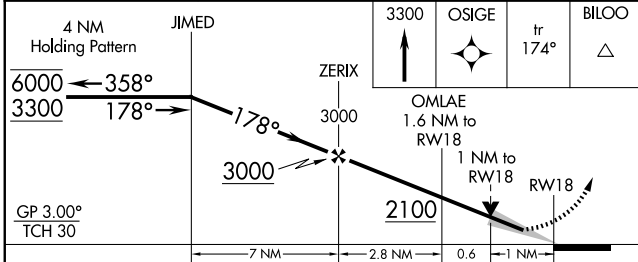
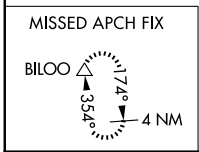
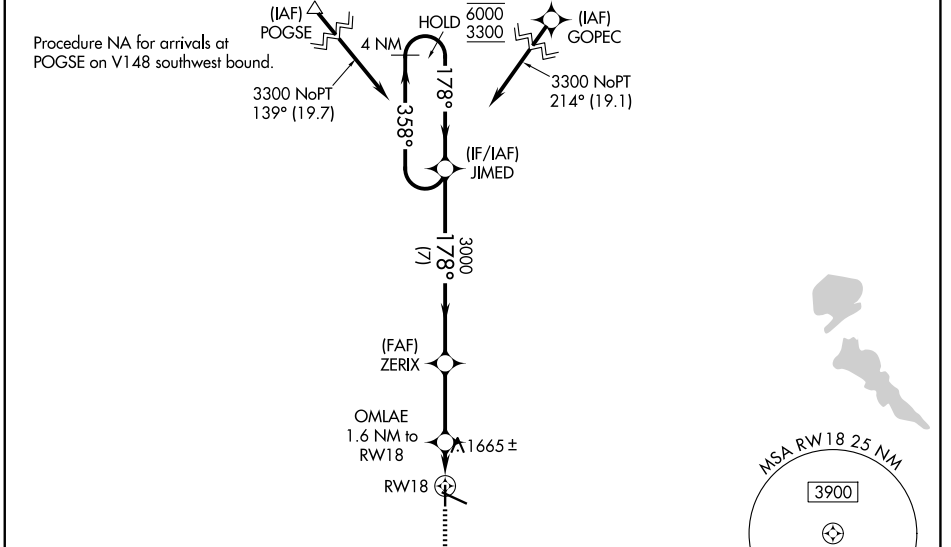
WAAS CH 93830 W18A	APP CRS 178°	Rwy Ldg TDZE Apt Elev	4200 1574 1574
--	------------------------	-----------------------------	---

RNAV (GPS) RWY 18

WORTHINGTON MUNI (OTG)

RNP APCH-GPS. ▼ For uncompensated Baro-VNAV systems, LNAV/VNAV NA ▲ below -25°C or above 54°C.	MISSED APPROACH: Climb to 3300 direct OSIGE and on track 174° to BILOO and hold.
--	--

AWOS-3PT 121.075	MINNEAPOLIS CENTER 132.05 317.4	UNICOM 122.8 (CTAF) 0
----------------------------	---	---------------------------------



CATEGORY	A	B	C	D
LPV DA	1774-1 200 (200-1)			
LNAV/VNAV DA	1824-1 250 (300-1)			
LNAV MDA	1920-1 346 (400-1)			
CIRCLING	2100-1 526 (600-1)	2100-1½ 526 (600-1½)		2320-2½ 746 (800-2½)

NC-1, 14 MAY 2026 to 11 JUN 2026

NC-1, 14 MAY 2026 to 11 JUN 2026