

WAAS CH <b>50223</b> <b>W23A</b>	APP CRS <b>235°</b>	Rwy Ldg <b>5004</b> TDZE <b>921</b> Apt Elev <b>921</b>
--	------------------------	---

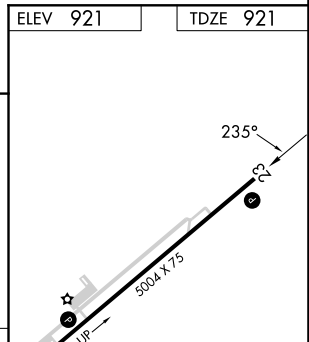
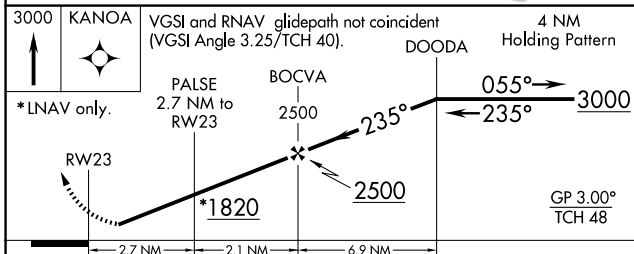
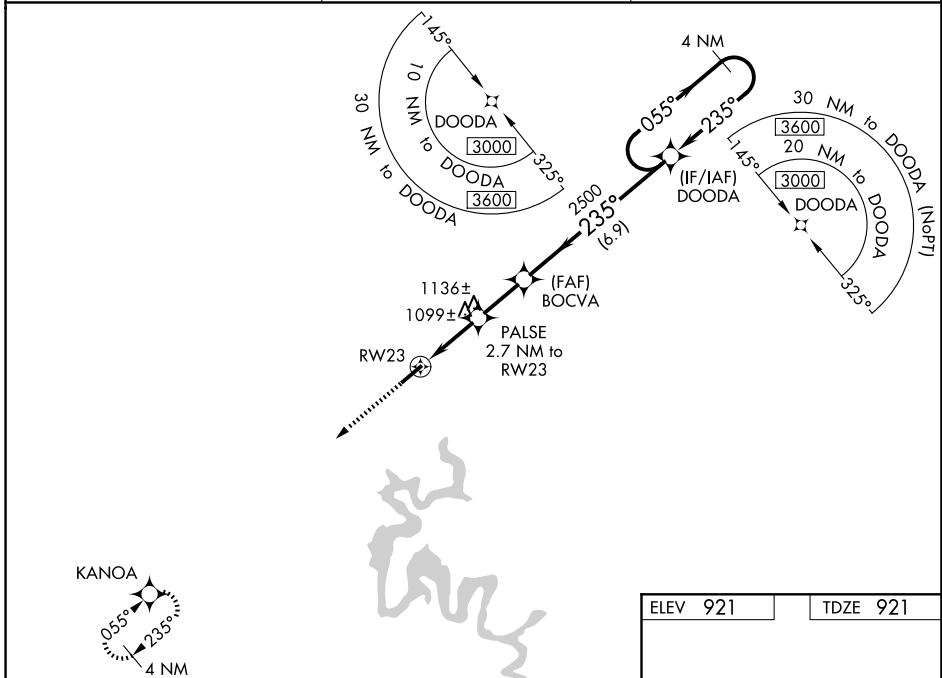
# RNAV (GPS) RWY 23

TAYLOR COUNTY (AAS)

**▼** Baro-VNAV NA when using Somerset altimeter setting. For uncompensated Baro-VNAV systems, LNAV/VNAV NA below -16°C (4°F) or above 54°C (130°F). DME/DME RNP-0.3 NA. When local altimeter setting not received, use Somerset altimeter setting: increase all DA 89 feet and all MDA 100 feet; increase LPV all Cats visibility ¼ mile, increase LNAV/VNAV all Cats visibility ⅓ mile, increase LNAV Cats C and D visibility ¼ mile, and increase Circling Cats C visibility ¼ mile and Cat D visibility ½ mile. Helicopter visibility reduction below ¾ SM NA.

**▲ NA** MISSED APPROACH: Climb to 3000 direct KANOA and hold.

AWOS-3 <b>121.125</b>	INDIANAPOLIS CENTER <b>124.625 353.65</b>	UNICOM <b>122.7 (CTAF) 0</b>
--------------------------	--	---------------------------------



CATEGORY	A	B	C	D
LPV DA		1177-¾	256 (300-¾)	
LNAV/VNAV DA		1366-1½	445 (500-1½)	
LNAV MDA	1360-1	439 (500-1)	1360-1¼	439 (500-1¼)
CIRCLING	1380-1 459 (500-1)	1400-1 479 (500-1)	1480-1½ 559 (600-1½)	1660-2¼ 739 (800-2¼)

ELEV 921	TDZE 921
----------	----------

MIRL Rwy 5-23 0  
REIL Rws 5 and 23 0

SE-1, 14 MAY 2026 to 11 JUN 2026

SE-1, 14 MAY 2026 to 11 JUN 2026