

WAAS CH 90223 W05A	APP CRS 055°	Rwy Ldg TDZE 904 Apt Elev 921	5004
--	------------------------	---	-------------

RNAV (GPS) RWY 5

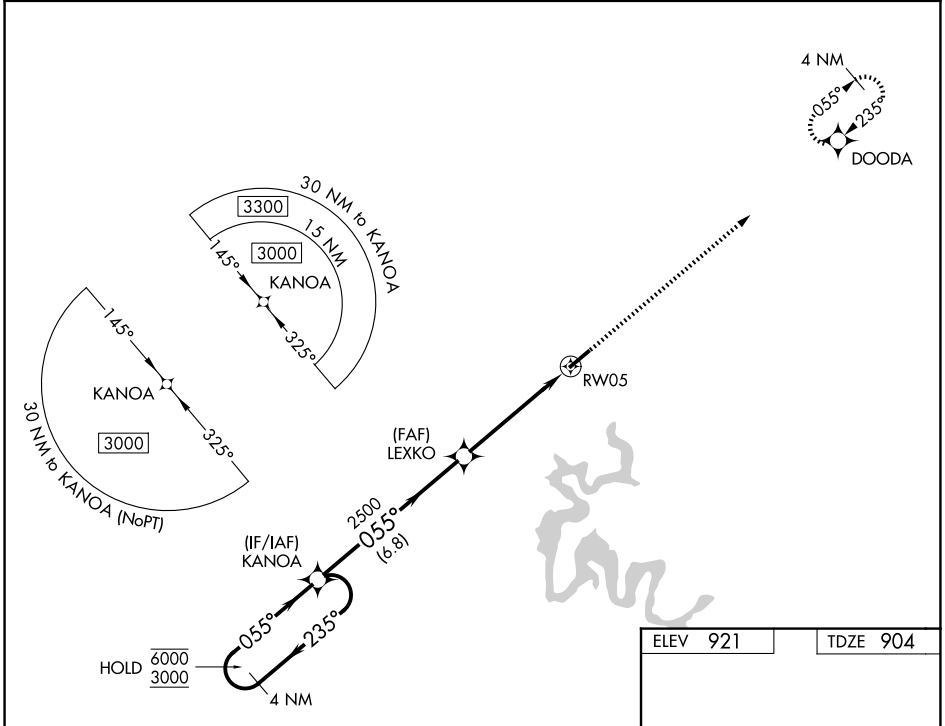
TAYLOR COUNTY (AAS)

RNP APCH - GPS.

⚠ Rwy 5 helicopter visibility reduction below $\frac{3}{4}$ SM NA. For uncompensated Baro-VNAV systems, LNAV/VNAV NA below -16°C or above 54°C.

MISSED APPROACH:
Climb to 3000 direct
DOODA and hold.

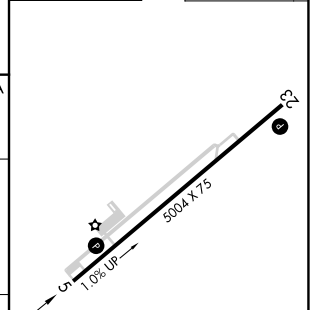
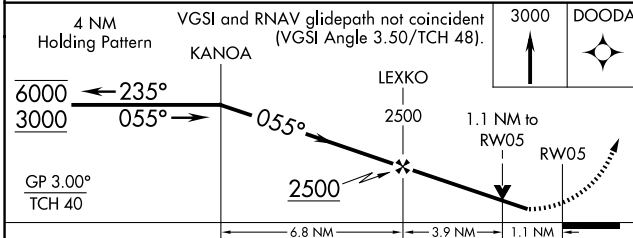
AWOS-3 121.125	INDIANAPOLIS CENTER 124.625 353.65	UNICOM 122.7 (CTAF) 0
--------------------------	--	---------------------------------



SE-1, 14 MAY 2026 to 11 JUN 2026

SE-1, 14 MAY 2026 to 11 JUN 2026

ELEV 921	TDZE 904
----------	----------



CATEGORY	A	B	C	D
LPV DA		1154- $\frac{3}{4}$	250 (300- $\frac{3}{4}$)	
LNAV/VNAV DA		1408-1 $\frac{3}{8}$	504 (500-1 $\frac{3}{8}$)	
LNAV MDA	1340-1	436 (500-1)	1340-1 $\frac{1}{4}$	436 (500-1 $\frac{1}{4}$)
CIRCLING	1380-1 459 (500-1)	1400-1 479 (500-1)	1480-1 $\frac{1}{2}$ 559 (600-1 $\frac{1}{2}$)	1660-2 $\frac{1}{4}$ 739 (800-2 $\frac{1}{4}$)

