

# RNAV (GPS) RWY 14

APCH CRS <b>139°</b>	Rwy Idg TDZE Arpt Elev <b>3025</b> <b>12</b> <b>12</b>
-------------------------	---

[USA]

FELKER AAF (KFAP)

RNP APCH - GPS

ODALS

MISSED APPROACH: Climbing left turn to 2000 direct HUMAL and hold.

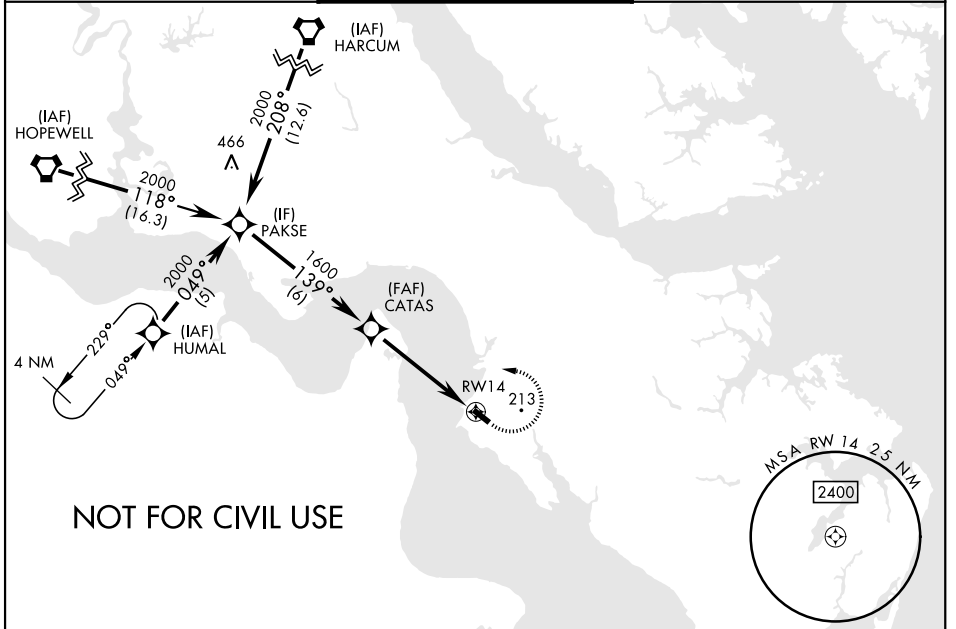
\*When ALS inop increase CAT AB vis to 1 mile.

▲ When local altimeter setting not received, use Newport News/Williamsburg Intl altimeter setting. Rwy 14 helicopter visibility reduction below 1 mile NA.

NORFOLK APP CON  
**125.7 335.625**

TOWER ★  
**126.3** (CTAF) **0 269.25**

GND CON  
**121.35 229.4**

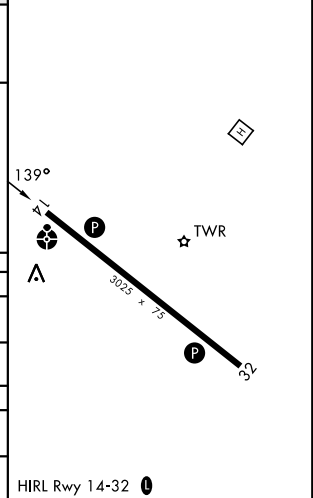
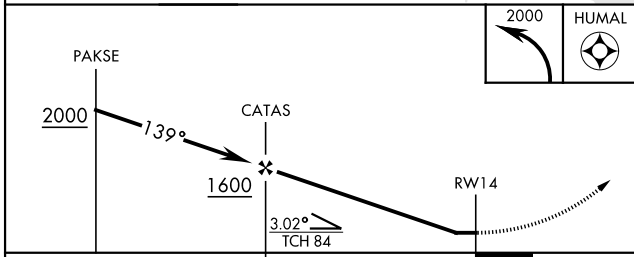


NOT FOR CIVIL USE

NE-3, 14 MAY 2026 to 11 JUN 2026

NE-3, 14 MAY 2026 to 11 JUN 2026

ELEV	12	TDZE	12
------	----	------	----



CATEGORY	A	B	C	D
RNAV MDA *	500- $\frac{3}{4}$ 488 (500- $\frac{3}{4}$ )			NA
CIRCLING	520-1 508 (600-1)	560-1 548 (600-1)		NA
NEWPORT NEWS /WILLIAMSBURG INTL ALTIMETER				
RNAV MDA	520- $\frac{3}{4}$ 508 (600- $\frac{3}{4}$ )			NA
CIRCLING	540-1 528 (600-1)	580-1 568 (600-1)		NA

HIRL Rwy 14-32 0

# RNAV (GPS) RWY 14