

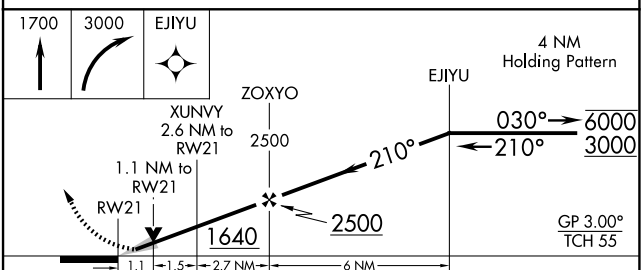
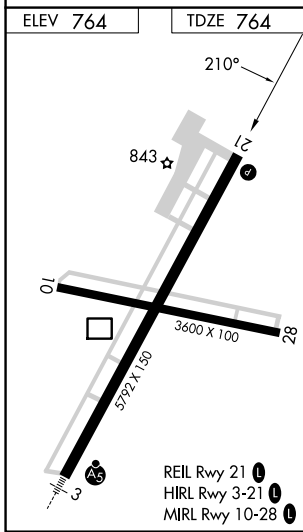
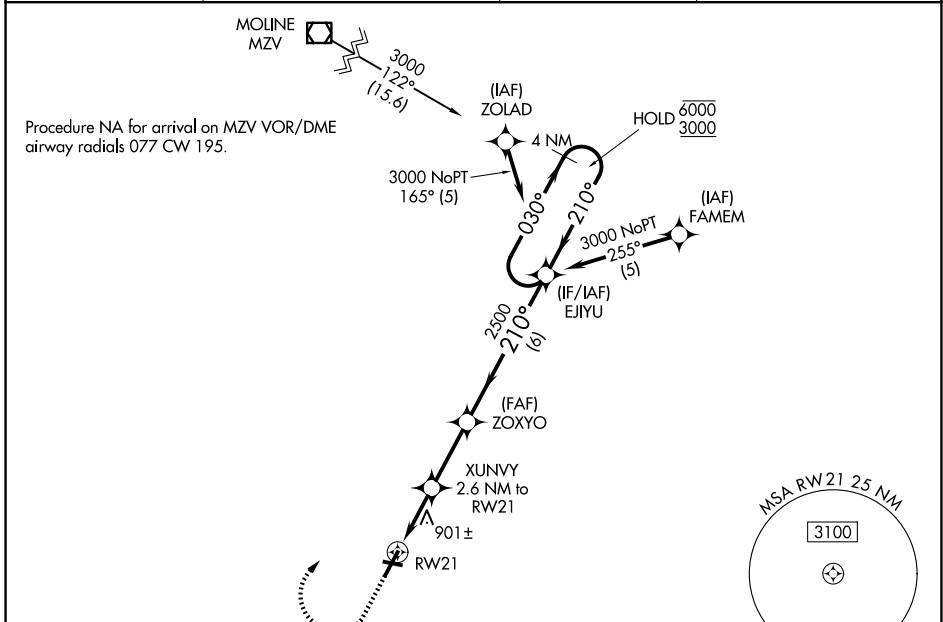
WAAS CH 50428 W21A	APP CRS 210°	Rwy Ldg TDZE Apt Elev	5792 764 764
--	------------------------	-----------------------------	---

RNAV (GPS) RWY 21

HARREL W TIMMONS GALESBURG RGNL (G/BG)

RNP APCH - GPS.		MISSED APPROACH: Climb to 1700 then climbing right turn to 3000 direct EJIYU and hold.	
For uncompensated Baro-VNAV systems, LNAV/VNAV NA below -16°C or above 54°C.			

AWOS-3 118.975	QUAD CITY APP CON ★ 133.275 257.8	CLNC DEL 120.7	UNICOM 123.0 (CTAF)
--------------------------	---	--------------------------	-------------------------------



CATEGORY	A	B	C	D
LPV DA		964-3/4	200 (200-3/4)	
LNAV/VNAV DA		1155-1 1/8	391 (400-1 1/8)	
LNAV MDA	1160-1	396 (400-1)	1160-1 1/8	396 (400-1 1/8)
CIRCLING	1220-1	456 (500-1)	1380-1 3/4 616 (700-1 3/4)	1620-2 3/4 856 (900-2 3/4)

RNAV (GPS) RWY 21

EC-3, 14 MAY 2026 to 11 JUN 2026

EC-3, 14 MAY 2026 to 11 JUN 2026