


WAAS CH <b>93629</b> <b>W03A</b>	APP CRS <b>030°</b>	Rwy Ldg TDZE Apt Elev	<b>5792</b> <b>764</b> <b>764</b>
--	------------------------	-----------------------------	---


# RNAV (GPS) RWY 3

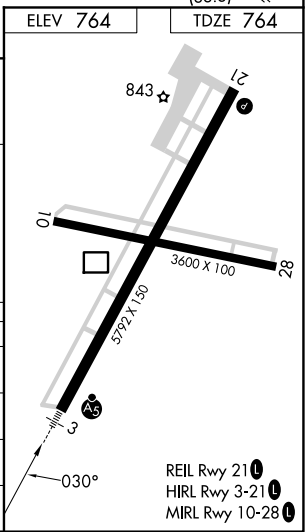
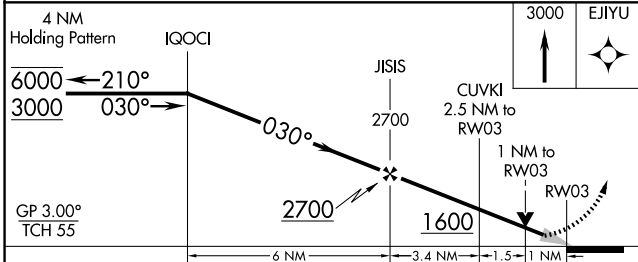
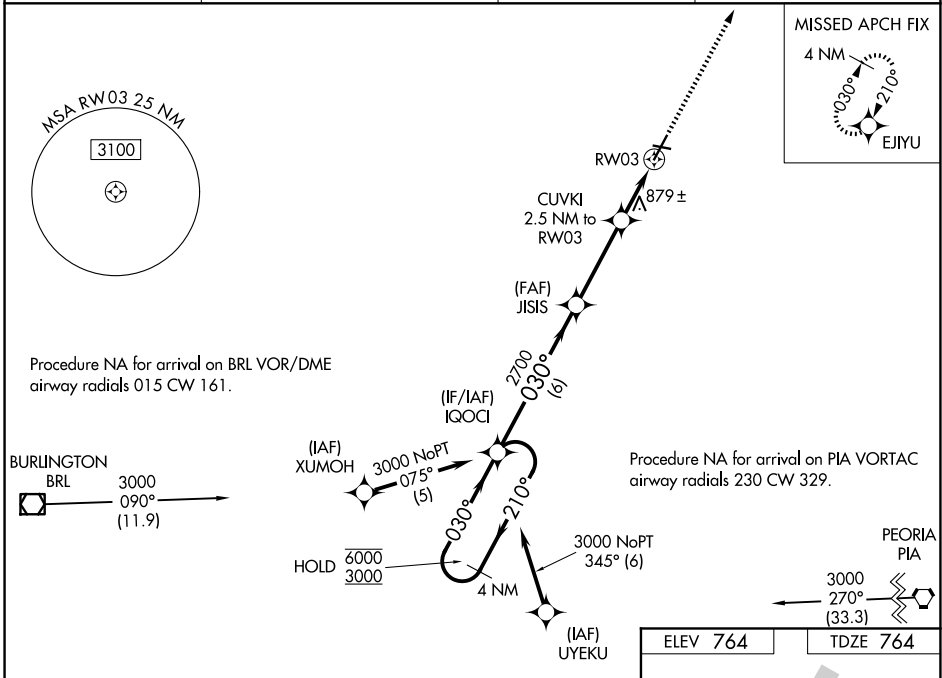
HARREL W TIMMONS GALESBURG RGNL (GBG)

RNP APCH - GPS.

▼ For uncompensated Baro-VNAV systems, LNAV/VNAV NA below -16°C or above 54°C. For inop ALS, increase LNAV/VNAV visibility to ¾ all Cats and LNAV Cats C/D to 1 SM.

▲ MISLSR  MISSED APPROACH: Climb to 3000 direct EJIYU and hold.

AWOS-3 <b>118.975</b>	QUAD CITY APP CON * <b>133.275 257.8</b>	CLNC DEL <b>120.7</b>	UNICOM <b>123.0 (CTAF)</b> 
--------------------------	---	--------------------------	---



CATEGORY	A	B	C	D
LPV DA		964-1/2	200 (200-1/2)	
LNAV/VNAV DA		1060-1/2	296 (300-1/2)	
LNAV MDA	1140-1/2	376 (400-1/2)	1140-5/8	376 (400-5/8)
CIRCLING	1220-1	456 (500-1)	1380-1 3/4 616 (700-1 3/4)	1620-2 3/4 856 (900-2 3/4)

# RNAV (GPS) RWY 3

EC-3, 14 MAY 2026 to 11 JUN 2026

EC-3, 14 MAY 2026 to 11 JUN 2026