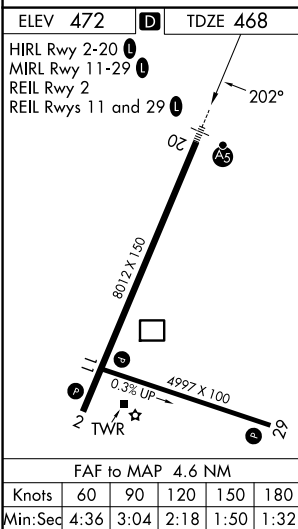
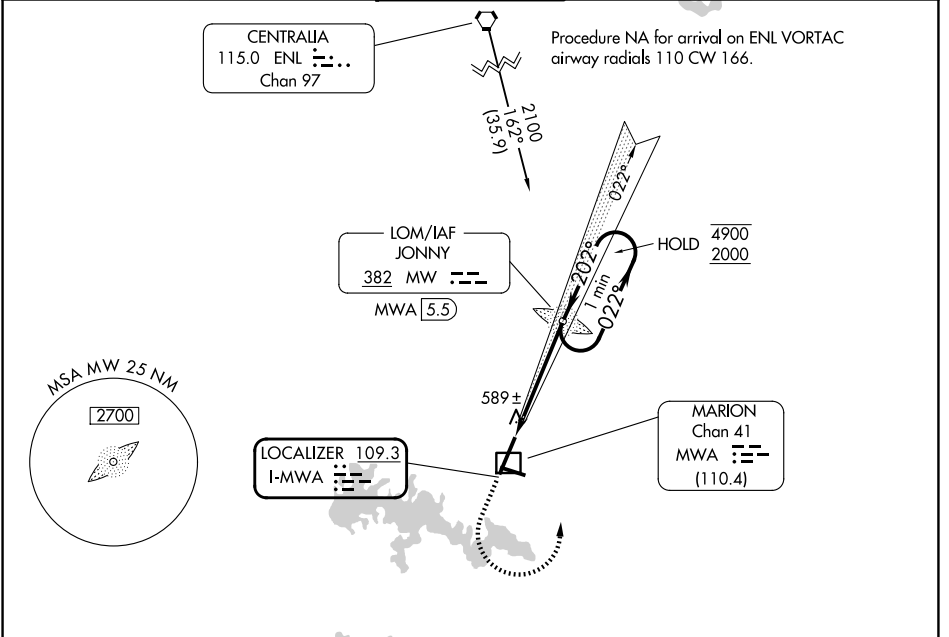


LOC I-MWA <b>109.3</b>	APP CRS <b>202°</b>	Rwy Ldg <b>8012</b> TDZE <b>468</b> Apt Elev <b>472</b>
---------------------------	------------------------	---

# ILS or LOC RWY 20

VETERANS AIRPORT OF SOUTHERN ILLINOIS (MWA)

DME required. ADF required.		MALSR	MISSED APPROACH: Climb to 1500 then climbing left turn to 2000 direct JONNY LOM/MWA 5.5 DME and hold.	
<p>▼ Circling Rwy 11 NA at night. For inop ALS, increase S-LOC 20</p> <p>▲ Cat C/D visibilities to 1 SM.</p>				
AWOS-3P <b>119.675</b>	KANSAS CITY CENTER <b>127.475 346.275</b>	MARION TOWER ★ <b>128.4 (CTAF) 0</b>	GND CON <b>121.7</b>	UNICOM <b>122.95</b>



1500	2000	MW	MW LOM MWA 5.5	One Minute Holding Pattern
* LOC only.				
* MWA 1.9		1990	022° → 4900	← 202° 2000
1 NM		3.6 NM	GS 3.00%	TCH 50
CATEGORY	A	B	C	D
S-ILS 20	668-½		200 (200-½)	
S-LOC 20	840-½	372 (400-½)	840-⅝	372 (400-⅝)
CIRCLING	920-1 448 (500-1)	940-1 468 (500-1)	1040-1½ 568 (600-1½)	1340-2¾ 868 (900-2¾)