

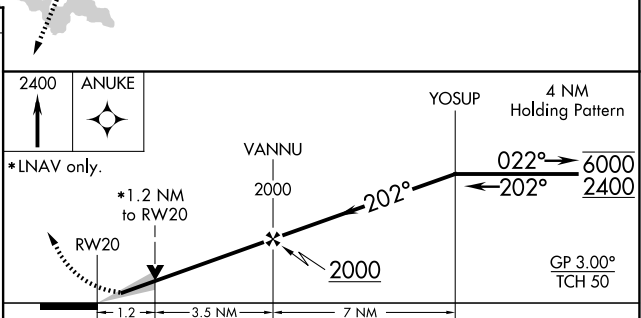
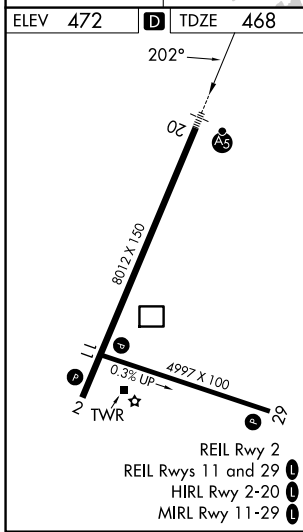
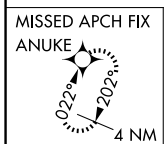
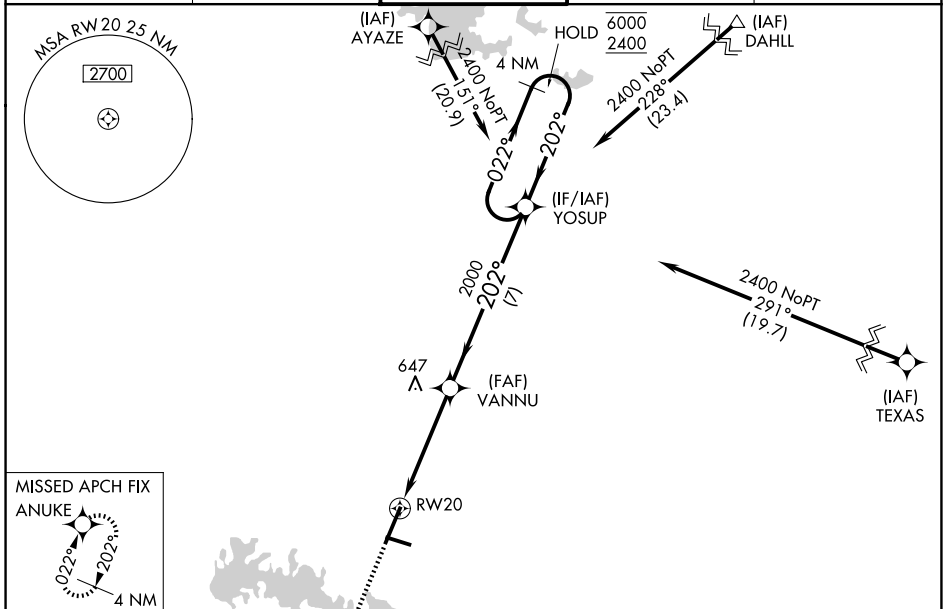
WAAS CH <b>57904</b> <b>W20A</b>	APP CRS <b>202°</b>	Rwy Ldg TDZE Apt Elev	<b>8012</b> <b>468</b> <b>472</b>
--	------------------------	-----------------------------	---

# RNAV (GPS) RWY 20

VETERANS AIRPORT OF SOUTHERN ILLINOIS (MWA)

RNP APCH.	MALSRL	MISSED APPROACH: Climb to 2400 direct ANUKE and hold.
-----------	--------	--

AWOS-3P <b>119.675</b>	KANSAS CITY CENTER <b>127.475 346.275</b>	MARION TOWER ★ <b>128.4 (CTAF)</b>	GND CON <b>121.7</b>	UNICOM <b>122.95</b>
---------------------------	--	---------------------------------------	-------------------------	-------------------------



CATEGORY	A	B	C	D
LPV DA		668-½	200 (200-½)	
LNAV/VNAV DA		773-½	305 (400-½)	
LNAV MDA	880-½	412 (500-½)	880-¾	412 (500-¾)
CIRCLING	920-1 448 (500-1)	940-1 468 (500-1)	1040-1½ 568 (600-1½)	1340-2¾ 868 (900-2¾)

EC-3, 14 MAY 2026 to 11 JUN 2026

EC-3, 14 MAY 2026 to 11 JUN 2026