

WAAS CH 56223 W03A	APP CRS 028°	Rwy Ldg 8002 TDZE 888 Apt Elev 918
--	------------------------	---

RNAV (GPS) RWY 3

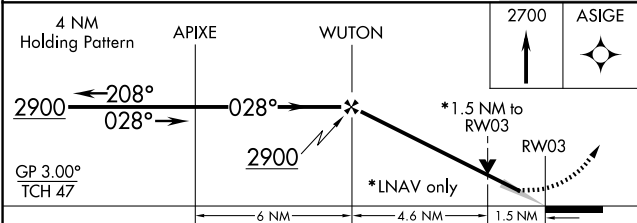
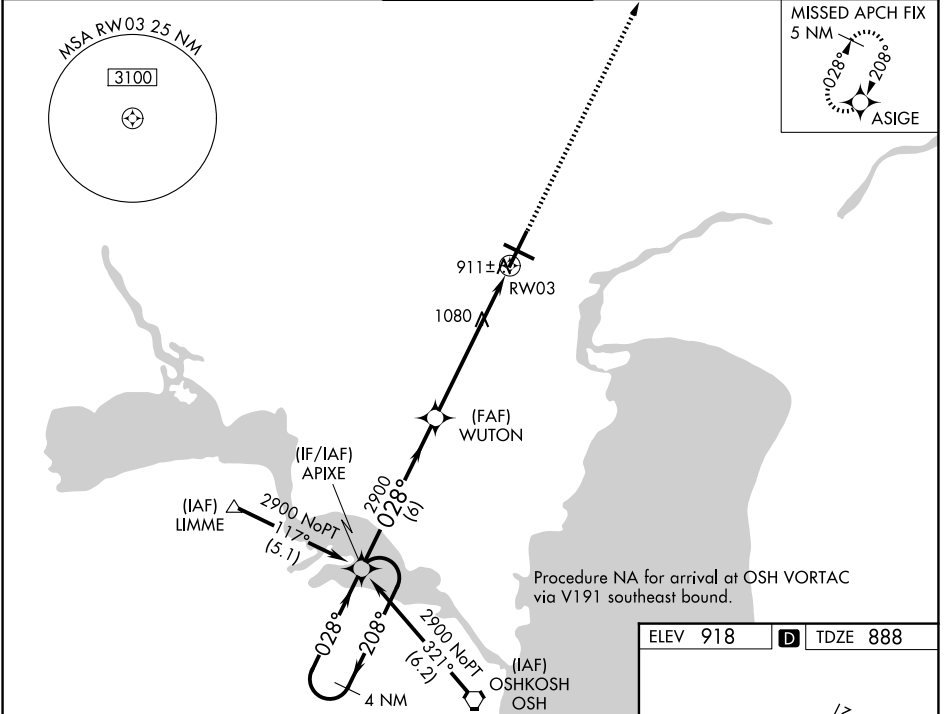
APPLETON INTL (ATW)

⚠ Baro-VNAV NA below -16°C (4°F). DME/DME RNP-0.3 NA. When local altimeter setting not received use Green Bay-Austin Straubel Intl altimeter setting and increase all DAs/MDAs 100 feet. Baro/VNAV and VDP NA when using Green Bay-Austin Straubel Intl altimeter setting. For inoperative MALSR increase LPV visibility to RVR 4000 all Cats.

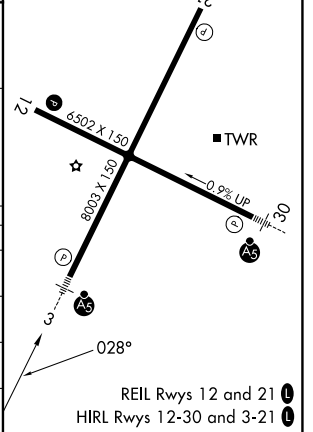
MALSR
AS

MISSED APPROACH:
Climb to 2700 direct ASIGE and hold.

ATIS 127.15	GREEN BAY APP CON* 126.3 338.2	APPLETON TOWER* 119.6 (CTAF) 0	GND CON 121.7	UNICOM 122.95
-----------------------	--	--	-------------------------	-------------------------



ELEV 918	D TDZE 888
----------	-------------------



CATEGORY	A	B	C	D
LPV DA		1138/24	250 (300-½)	
LNAV/VNAV DA		1232/40	344 (400-¾)	
LNAV MDA	1400/24	512 (500-½)	1400/50 512 (500-1)	1400/60 512 (500-1¼)
CIRCLING	1400-1	482 (500-1)	1400-1½ 482 (500-1½)	1480-2 562 (600-2)

EC-3, 14 MAY 2026 to 11 JUN 2026

EC-3, 14 MAY 2026 to 11 JUN 2026