

(TERPZ8.TERPZ) 24193

AL-5222 (FAA)

MARTIN STATE (MTN)

BALTIMORE, MARYLAND

# TERPZ EIGHT DEPARTURE (RNAV)

POTOMAC DEP CON  
 119.7 290.475  
 ATIS  
 124.925  
 GND CON  
 121.8 253.4  
 MARTIN TOWER ★  
 121.3 (CTAF) 254.425  
 UNICOM  
 122.95

RNAV 1 - DME/DME/IRU or GPS.

RADAR required.

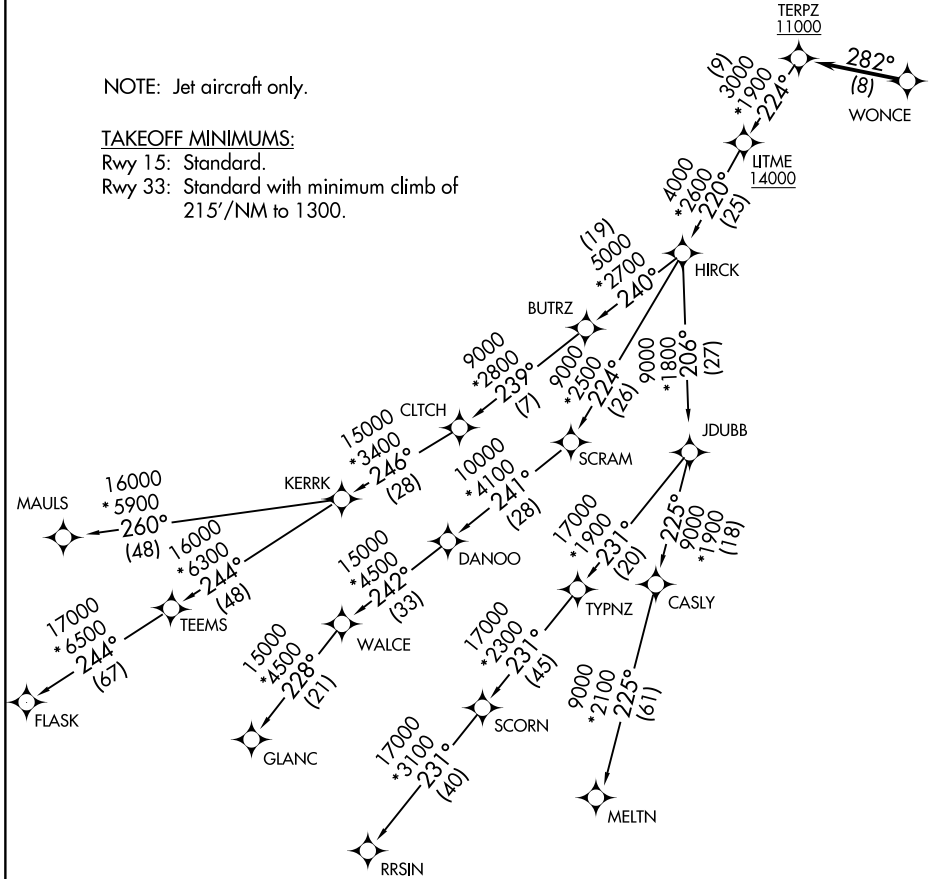
**TOP ALTITUDE:**  
**17000**

NOTE: Jet aircraft only.

TAKEOFF MINIMUMS:

Rwy 15: Standard.

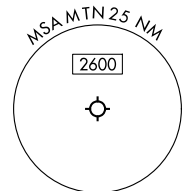
Rwy 33: Standard with minimum climb of 215'/NM to 1300.



NE-3, 14 MAY 2026 to 11 JUN 2026

NE-3, 14 MAY 2026 to 11 JUN 2026

NOTE: Chart not to scale.



# TERPZ EIGHT DEPARTURE (RNAV)

(TERPZ8.TERPZ) 11JUL24

BALTIMORE, MARYLAND  
MARTIN STATE (MTN)

# TERPZ EIGHT DEPARTURE (RNAV)



## DEPARTURE ROUTE DESCRIPTION

Climb on assigned heading for RADAR vectors to WONCE, thence. . . .

. . . then on track 282° to cross TERPZ at or above 11000, then on assigned transition.  
Maintain 17000, expect filed altitude 10 minutes after departure.

CLTCH TRANSITION (TERPZ8.CLTCH)

FLASK TRANSITION (TERPZ8.FLASK)

GLANC TRANSITION (TERPZ8.GLANC)

MAULS TRANSITION (TERPZ8.MAULS)

MELTN TRANSITION (TERPZ8.MELTN)

RRSIN TRANSITION (TERPZ8.RRSIN)

NE-3, 14 MAY 2026 to 11 JUN 2026

NE-3, 14 MAY 2026 to 11 JUN 2026