

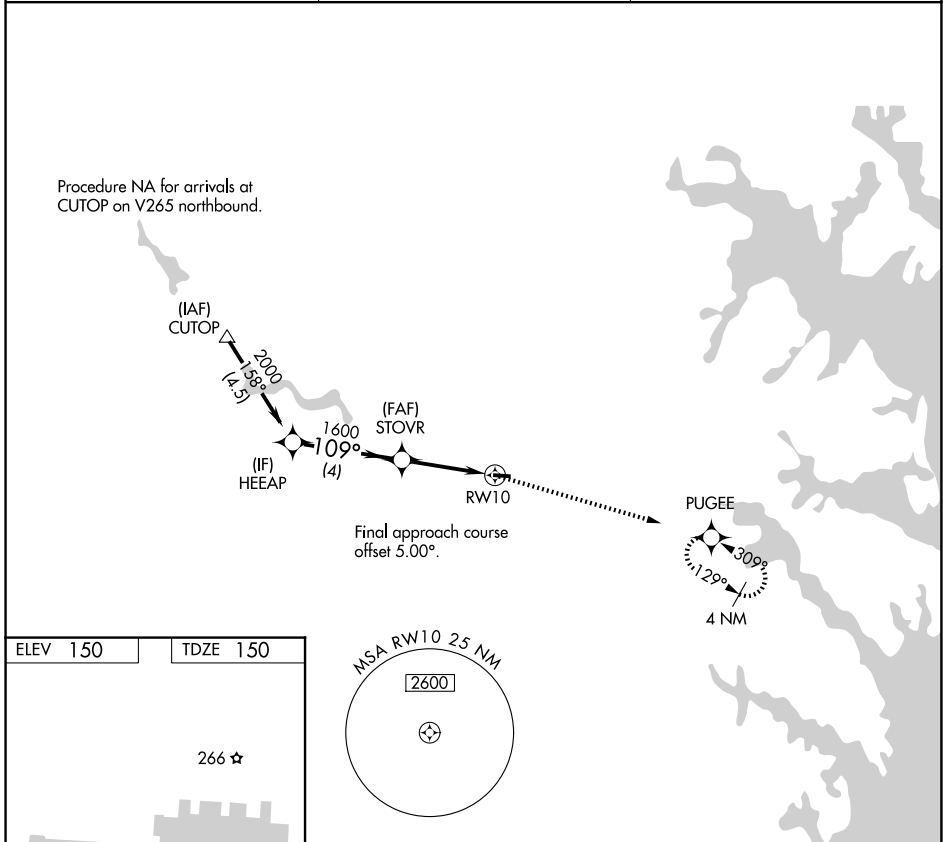
APP CRS	Rwy Ldg	3000
109°	TDZE	150
	Apt Elev	150

RNAV (GPS) RWY 10

FORT MEADE EXEC (FME)

RNP APCH - GPS.		MISSED APPROACH: Climb to 2100 direct PUGEE and hold.
	Rwy 10 helicopter visibility reduction below 1 SM NA.	
	Straight-in Rwy 10 NA at night, Circling Rwy 10 NA at night.	

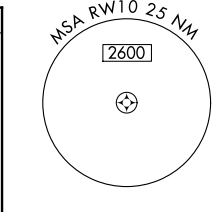
AWOS-3 123.925	POTOMAC APP CON 119.7 290.475	UNICOM 123.05 (CTAF) 0
--------------------------	---	----------------------------------



ELEV 150	TDZE 150
----------	----------

266 ☆

REIL Rws 10 and 28 0
MIRL Rwy 10-28 0



VGSI and descent angles not coincident (VGSI Angle 4.00°/TCH 51).

HEELAP	STOVR	RW10	PUGEE
2000	1600		2100
4 NM		3.4 NM	
109°	4.00°		
TCH 40			

CATEGORY	A	B	C	D
LNVA MDA	780-1	630 (700-1)	NA	
CIRCLING	820-1 670 (700-1)	960-1 810 (900-1)	NA	

NE-3, 14 MAY 2026 to 11 JUN 2026

NE-3, 14 MAY 2026 to 11 JUN 2026