

WAAS CH 56347 W28A	APP CRS 284°	Rwy Ldg 3000 TDZE 150 Apt Elev 150
--	------------------------	---

RNAV (GPS) RWY 28

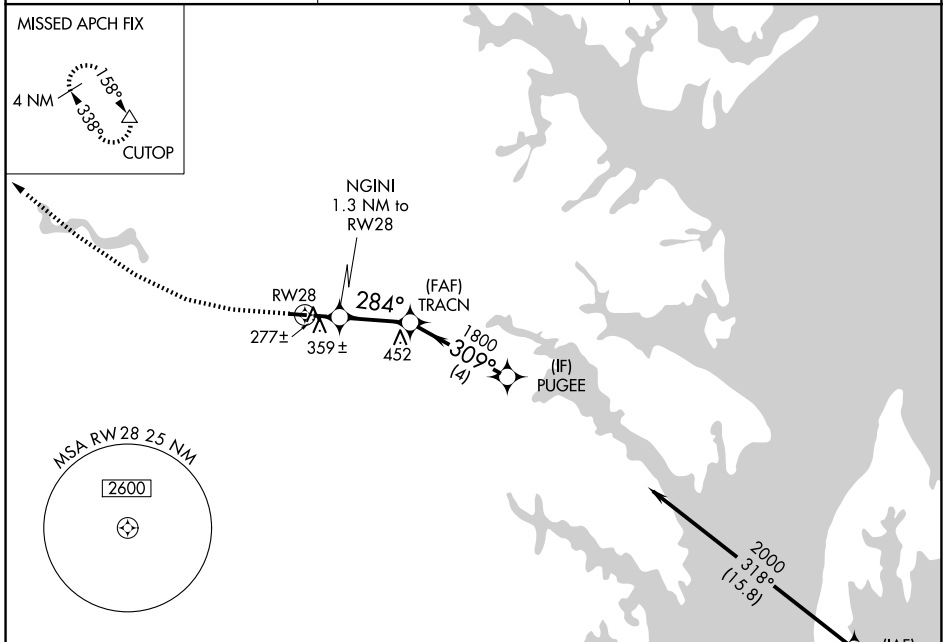
FORT MEADE EXEC (FME)

RNP APCH - GPS.

⚠ Rwy 28 helicopter visibility reduction below 3/4 SM NA. Circling Rwy 10 NA at night.

MISSED APPROACH: Climb to 570 then climbing right turn to 2000 direct CUTOP and hold.

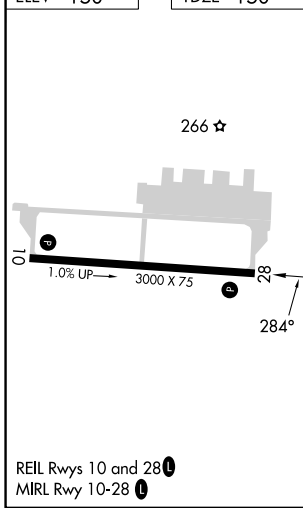
AWOS-3 123.925	POTOMAC APP CON 119.7 290.475	UNICOM 123.05 (CTAF) 0
--------------------------	---	----------------------------------



NE-3, 14 MAY 2026 to 11 JUN 2026

NE-3, 14 MAY 2026 to 11 JUN 2026

ELEV 150	TDZE 150
----------	----------



REIL Rwy 10 and 28 **0**
MIRL Rwy 10-28 **0**

570	2000	CUTOP	VGSI and descent angles not coincident (VGSI Angle 4.00/TCH 57).	PUGEE
			NGINI 1.3 NM to RWY 28	
			TRACN	
			RWY 28	
			720	
			284°	
			1800	
			309°	
			2000	
			1.3 NM	2.5 NM
			4 NM	
CATEGORY	A	B	C	D
LP MDA	540-1	390 (400-1)		NA
LNAV MDA	620-1	470 (500-1)		NA
CIRCLING	820-1 670 (700-1)	960-1 810 (900-1)		NA