

# RNAV (GPS) RWY 13

APCH CRS **132°** Rwy ldg **6100**  
 TDZE **1150**  
 Arpt Elev **1150**

[USA]

RAY S. MILLER AAF (KRYM)

RNP APCH-GPS

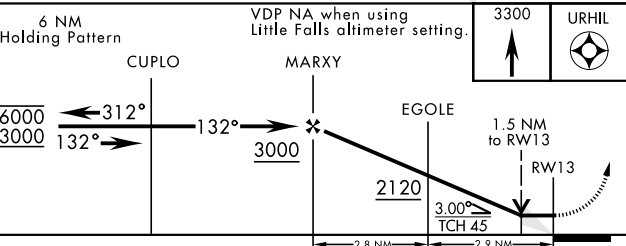
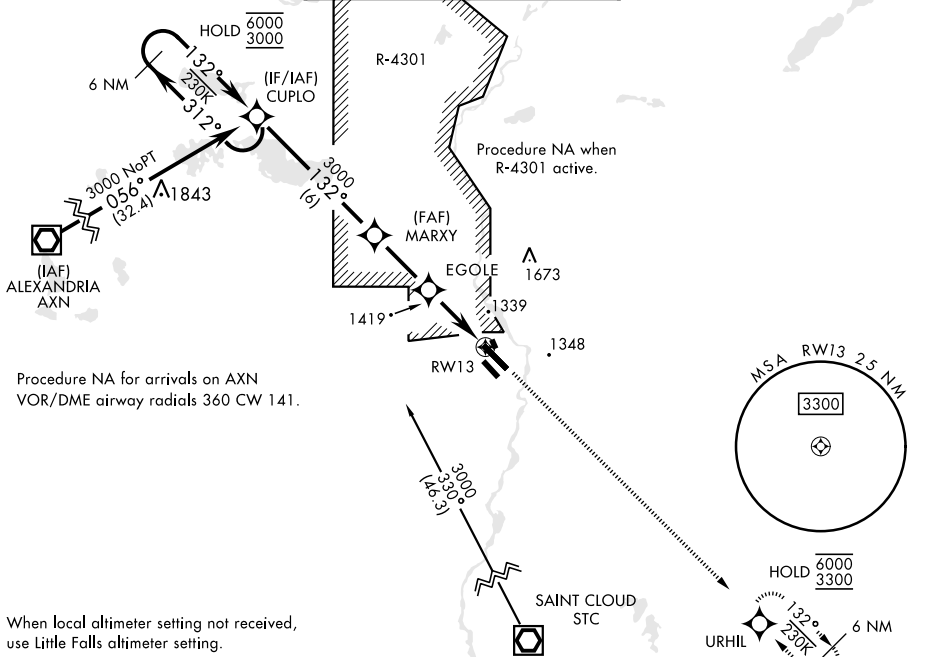
RADAR required for procedure entry at STC VOR/DME.

MISSED APPROACH: Climb to 3300 direct URHIL and hold.

MINNEAPOLIS CENTER  
**118.05 239.0**

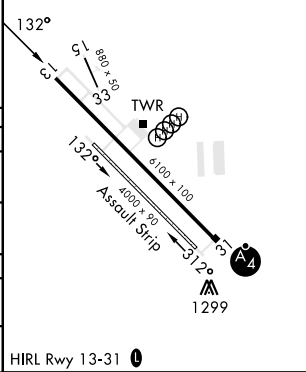
MILLER TOWER ★  
**126.2 254.4**

CLNC DEL  
**126.2**



ELEV 1150 TDZE 1150

CATEGORY	A	B	C	D
RNAV MDA	1680-1 530 (600-1)	1680-1½ 530 (600-1½)		
<b>C</b> CIRCLING	1680-1 530 (600-1)	1720-1½ 570 (600-1½)	2080-3 930 (1000-3)	
LITTLE FALLS ALTIMETER SETTING				
RNAV MDA	1720-1 570 (600-1)	1720-1½ 570 (600-1½)		
<b>C</b> CIRCLING	1720-1 570 (600-1)	1760-1¾ 610 (700-1¾)	2120-3 970 (1000-3)	



# RNAV (GPS) RWY 13

NC-1, 14 MAY 2026 to 11 JUN 2026

NC-1, 14 MAY 2026 to 11 JUN 2026