

# RNAV (GPS) RWY 31

APCH CRS <b>312°</b>	Rwy Idg <b>6100</b>
	THRE <b>1146</b>
	Arprt Elev <b>1150</b>

[USA]

RAY S. MILLER AAF (KRYM)

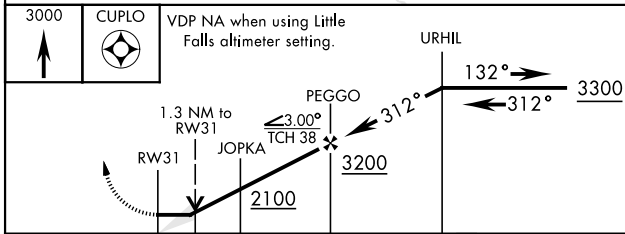
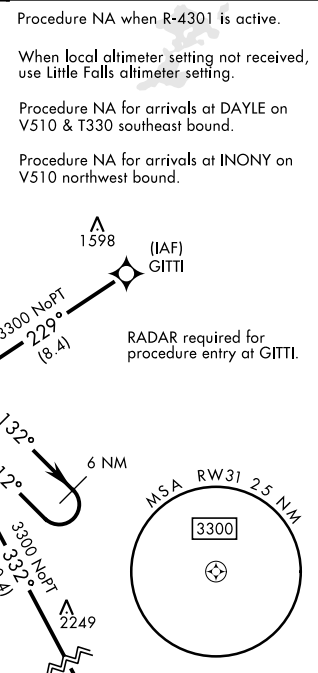
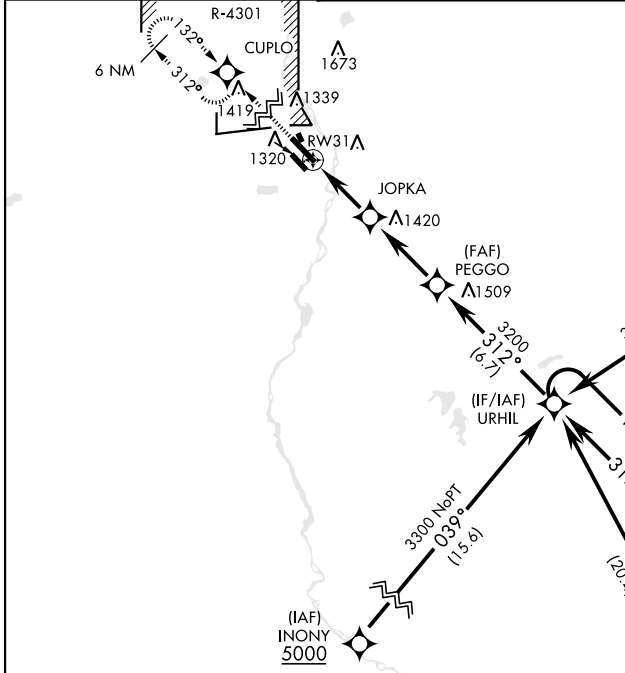
RNP APCH - GFS



MISSED APPROACH: Climb to 3000 direct CUPLO and hold.

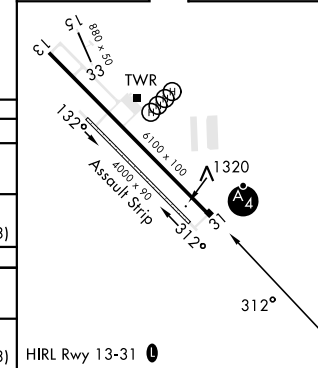
▼ \*When ALS inop, increase CAT AB vis to 1 mile; CAT CD vis to 1¼ miles.  
 ▲ \*\*When ALS inop, increase CAT AB vis to 1 mile; CAT CD vis to 1½ miles.

MINNEAPOLIS CENTER <b>118.05 239.0</b>	MILLER TOWER ★ <b>126.2 0 254.4</b>	GND CON <b>126.2</b>
---	--	-------------------------



ELEV 1150	THRE 1146
-----------	-----------

CATEGORY	A	B	C	D
LNAV MDA *	1580-¾ 434 (500-¾)	1580-1 434 (500-1)		
CIRCLING	1640-1 490 (500-1)	1660-1 510 (600-1)	1720-1½ 570 (600-1½)	2080-3 930 (1000-3)
LITTLE FALLS MORRISON CO LINDBERGH FLD ALTIMETER SETTING MINIMUMS				
LNAV MDA **	1620-¾ 474 (500-¾)	1620-1½ 474 (500-1½)		
CIRCLING	1680-1 530 (600-1)	1700-1 550 (600-1)	1760-1¾ 610 (700-1¾)	2120-3 970 (1000-3)



# RNAV (GPS) RWY 31

NC-1, 14 MAY 2026 to 11 JUN 2026

NC-1, 14 MAY 2026 to 11 JUN 2026