

WAAS CH <b>53408</b> <b>W18A</b>	APP CRS <b>181°</b>	Rwy Ldg <b>4016</b> TDZE <b>16</b> Apt Elev <b>16</b>
--	------------------------	---

# RNAV (GPS) RWY 18

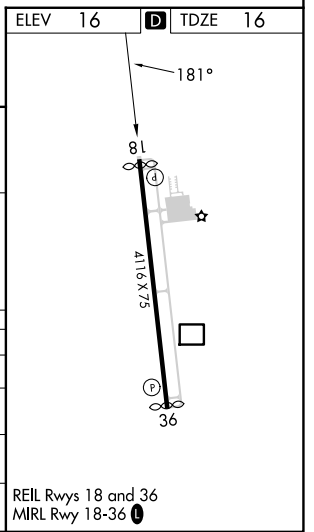
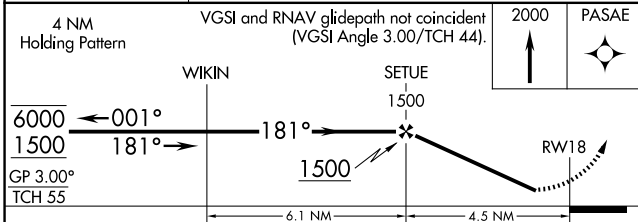
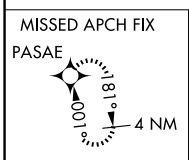
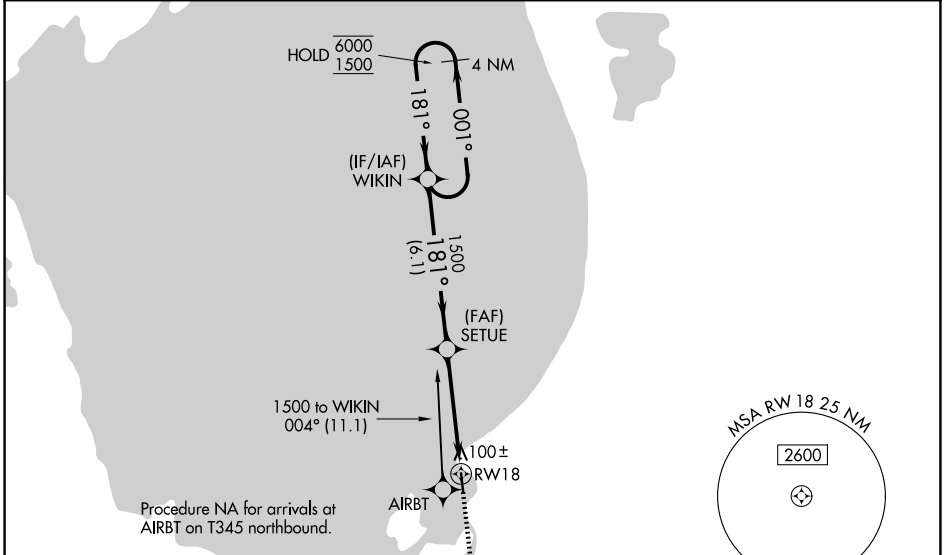
PALM BEACH COUNTY GLADES (PHK)

RNP APCH - GPS.

**▽** Rwy 18 helicopter visibility reduction below 3/4 SM NA. Use PBI altimeter setting;  
**△** NA when not received, procedure NA. Baro-VNAV NA.

MISSED APPROACH: Climb to 2000 direct PASAE and hold.

PBI ASOS <b>123.75</b>	PALM BEACH APP CON <b>125.2 317.4</b>	UNICOM <b>122.8 (CTAF) 0</b>
---------------------------	--	---------------------------------



CATEGORY	A	B	C	D
LPV DA	358-1		342 (400-1)	
LNAV/VNAV DA	440-1 1/4		424 (500-1 1/4)	
LNAV MDA	440-1	424 (500-1)	440-1 1/4	424 (500-1 1/4)
CIRCLING	580-1	564 (600-1)	760-2 1/4 744 (800-2 1/4)	760-2 1/2 744 (800-2 1/2)

SE-3, 14 MAY 2026 to 11 JUN 2026

SE-3, 14 MAY 2026 to 11 JUN 2026