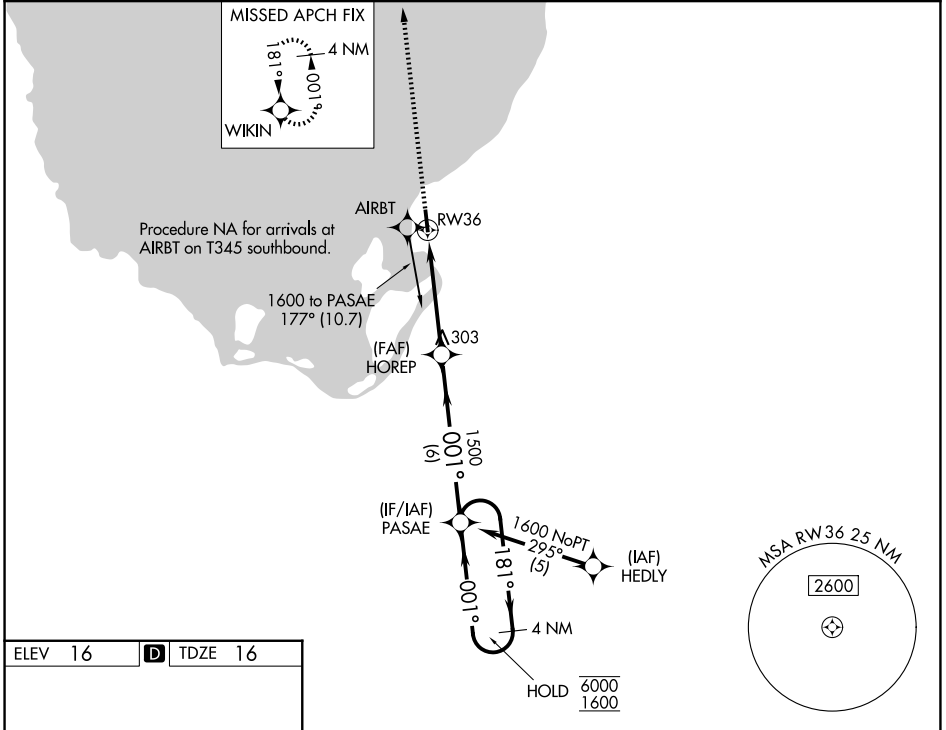


WAAS CH 56408 W36A	APP CRS 001°	Rwy Ldg TDZE Apt Elev	4069 16 16
--	------------------------	-----------------------------	---------------------------------------

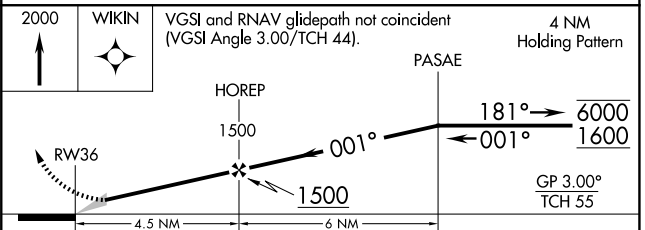
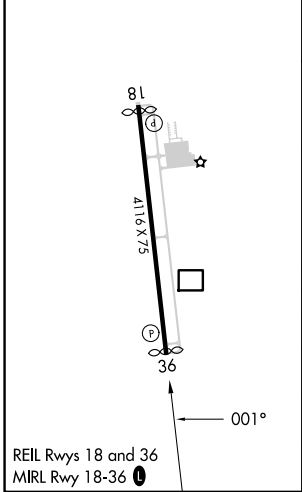
RNAV (GPS) RWY 36

PALM BEACH COUNTY GLADES (PHK)

RNP APCH - GPS.		MISSED APPROACH: Climb to 2000 direct WIKIN and hold.
▼ Baro-VNAV NA. ▲ NA Use PBI altimeter setting; when not received, procedure NA.		
PBI ASOS 123.75	PALM BEACH APP CON 125.2 317.4	UNICOM 122.8 (CTAF) 0



ELEV 16	D	TDZE 16
---------	----------	---------



CATEGORY	A	B	C	D
LPV DA	471-1 ³ / ₈ 455 (500-1 ¹ / ₂)			
LNAV/VNAV DA	429-1 ¹ / ₈ 413 (500-1 ¹ / ₂)			
LNAV MDA	540-1	524 (600-1)	540-1 ¹ / ₂	524 (600-1 ¹ / ₂)
CIRCLING	580-1	564 (600-1)	760-2 ¹ / ₄ 744 (800-2 ¹ / ₄)	760-2 ¹ / ₂ 744 (800-2 ¹ / ₂)

SE-3, 14 MAY 2026 to 11 JUN 2026

SE-3, 14 MAY 2026 to 11 JUN 2026