

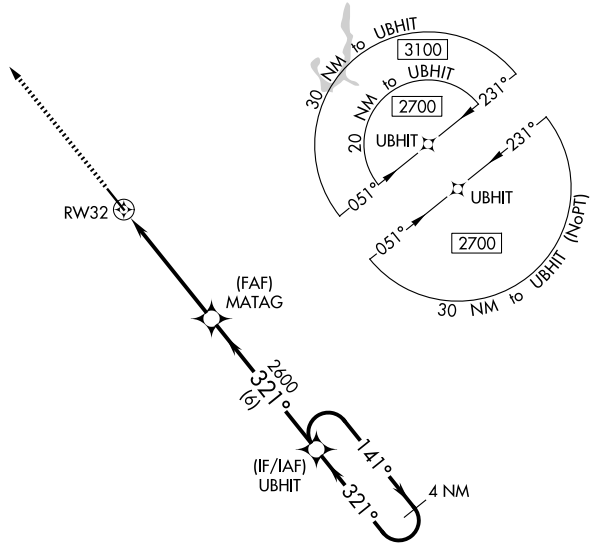
WAAS CH 99702 W32A	APP CRS 321°	Rwy Ldg TDZE Apt Elev	5600 950 953
--	------------------------	-----------------------------	---

RNAV (GPS) RWY 32

NEWTON MUNI-EARL JOHNSON FLD (TNU)

<p>⚠ For uncompensated Baro-VNAV systems, LNAV/VNAV NA below -19°C (2°F) or above 54°C (130°F). DME/DME RNP-0.3 NA. For inop MALSR, increase LNAV/VNAV all Cats visibility to ¾ SM.</p>	<p>MALSR</p>	<p>MISSED APPROACH: Climb to 3100 direct KOWDO and hold.</p>
--	---------------------	--

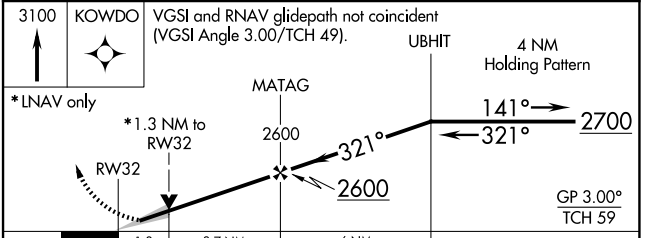
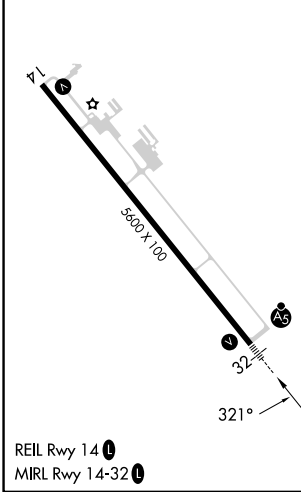
AWOS-3 132.275	DES MOINES APP CON 123.9 307.15	CLNC DEL 126.3	UNICOM 122.8 (CTAF) 0
--------------------------	---	--------------------------	---------------------------------



NC-3, 14 MAY 2026 to 11 JUN 2026

NC-3, 14 MAY 2026 to 11 JUN 2026

ELEV 953	TDZE 950
----------	----------



CATEGORY	A	B	C	D
LPV DA		1150-½	200 (200-½)	
LNAV/VNAV DA		1202-½	252 (300-½)	
LNAV MDA	1400-½	450 (500-½)	1400-⅞	450 (500-⅞)
CIRCLING	1420-1 467 (500-1)	1440-1 487 (500-1)	1520-1½ 567 (600-1½)	1600-2 647 (700-2)