

| | | | |
|--|------------------------|-----------------------------|---|
| WAAS CH 86938 W18A | APP CRS 176° | Rwy Ldg TDZE Apt Elev | 5513 1298 1304 |
|--|------------------------|-----------------------------|---|

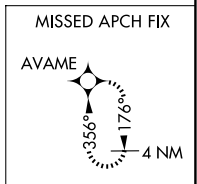
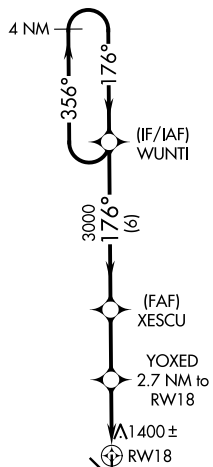
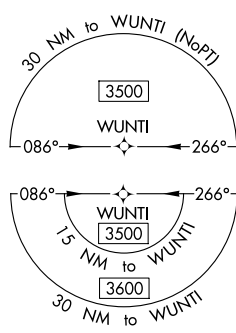
RNAV (GPS) RWY 18

MITCHELL MUNI (MHE)

⚠ For uncompensated Baro-VNAV systems, LNAV/VNAV NA below -20°C (-4°F) or above 54°C (130°F). DME/DME RNP-0.3 NA. When local altimeter setting not received use Huron Rgnl altimeter setting and increase LPV DA to 1637, LNAV/VNAV DA to 1685 and increase all MDA 100 feet. Increase LPV visibility all Cats to 1½ mile, LNAV/VNAV visibility all Cats to 1¾ mile and LNAV Cats C/D to 1¾ mile. Increase Circling Cat C visibility to 1¾ mile. Baro VNAV and VDP NA when using Huron Rgnl altimeter setting.

MISSED APPROACH: Climb to 3500 direct AVAME and hold.

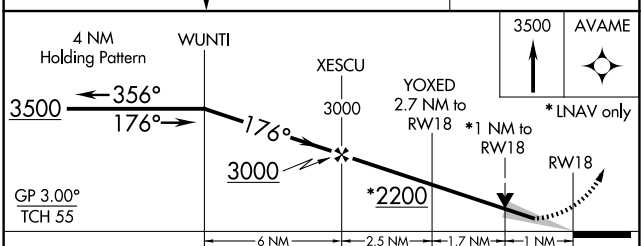
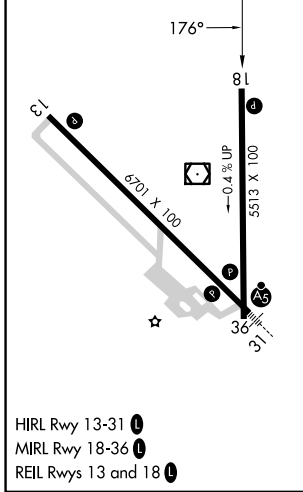
| | | |
|------------------------|---|---------------------------------|
| ASOS 124.175 | MINNEAPOLIS CENTER 126.25 339.8 | UNICOM 122.8 (CTAF) 0 |
|------------------------|---|---------------------------------|



NC-1, 14 MAY 2026 to 11 JUN 2026

NC-1, 14 MAY 2026 to 11 JUN 2026

| | |
|------------------|------------------|
| ELEV 1304 | TDZE 1298 |
|------------------|------------------|



| CATEGORY | A | B | C | D |
|--------------|-------------|-------------|--------------|-------------|
| LPV DA | | 1548-1 | 250 (300-1) | |
| LNAV/VNAV DA | | 1596-1 | 298 (300-1) | |
| LNAV MDA | | 1660-1 | 362 (400-1) | |
| CIRCLING | 1740-1 | 1760-1 | 1820-1½ | 1860-2 |
| | 436 (500-1) | 456 (500-1) | 516 (600-1½) | 556 (600-2) |