

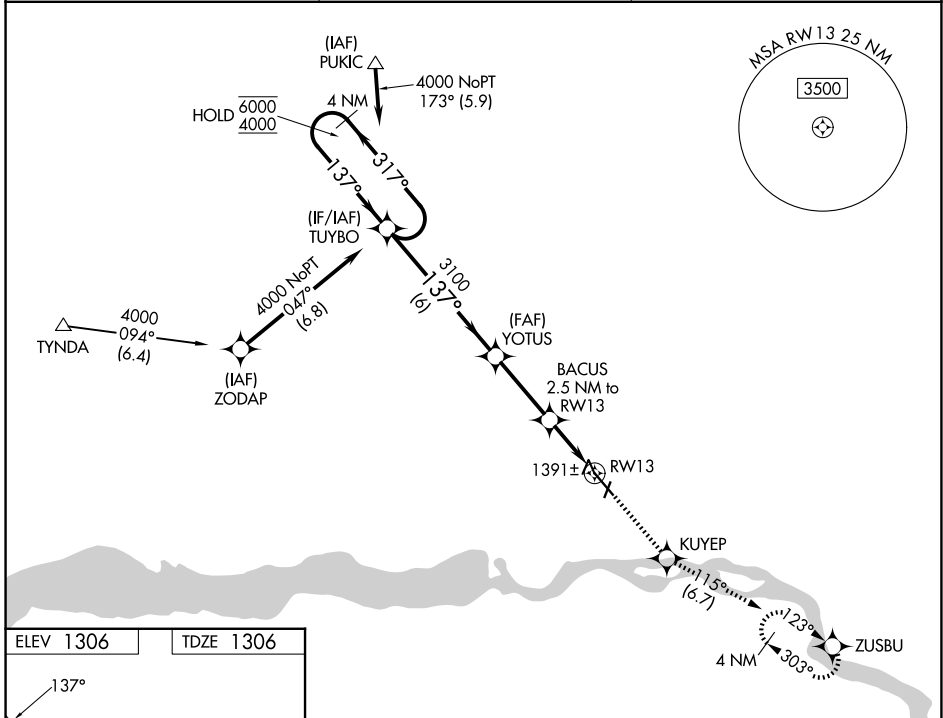
WAAS CH <b>50400</b> <b>W13A</b>	APP CRS <b>137°</b>	Rwy Ldg TDZE Apt Elev	<b>6094</b> <b>1306</b> <b>1306</b>
--	------------------------	-----------------------------	---

# RNAV (GPS) RWY 13

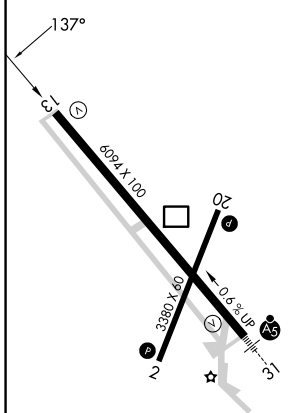
CHAN GURNEY MUNI (YKN)

RNP APCH - GPS.	MISSED APPROACH: Climb to 4000 direct KUYEP and on track 115° to ZUSBU and hold, continue climb-in-hold to 4000.
<p>▼ Circling NA east of Rwy 20 and northeast of Rwy 31.</p> <p>⚠ Rwy 13 helicopter visibility reduction below ¾ SM NA.</p>	

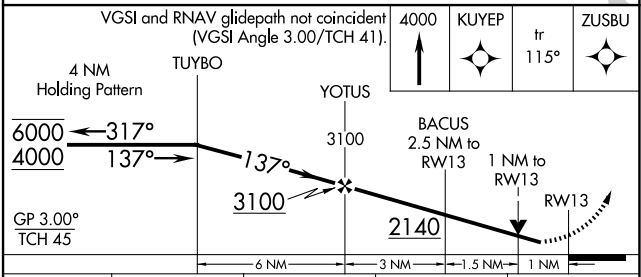
AWOS-3PT <b>119.05</b>	MINNEAPOLIS CENTER <b>125.025 235.625</b>	UNICOM <b>122.8 (CTAF) 0</b>
---------------------------	--	---------------------------------



ELEV 1306	TDZE 1306
-----------	-----------



- REIL Rwy 13 **0**
- HIRL Rwy 13-31 **0**
- MIRL Rwy 2-20 **0**



CATEGORY	A	B	C	D
LPV DA		1556-¾	250 (300-¾)	
LNAV MDA		1660-1	354 (400-1)	
CIRCLING	1760-1	1780-1	1980-2	1980-2¼
	454 (500-1)	474 (500-1)	674 (700-2)	674 (700-2¼)

NC-1, 14 MAY 2026 to 11 JUN 2026

NC-1, 14 MAY 2026 to 11 JUN 2026