

WAAS CH 42726 W23A	APP CRS 234°	Rwy Ldg TDZE 443 Apt Elev 459	5722
--	------------------------	---	-------------

RNAV (GPS) RWY 23

MOORE COUNTY (SOP)

RNP APCH.

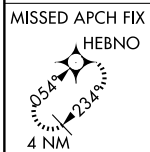
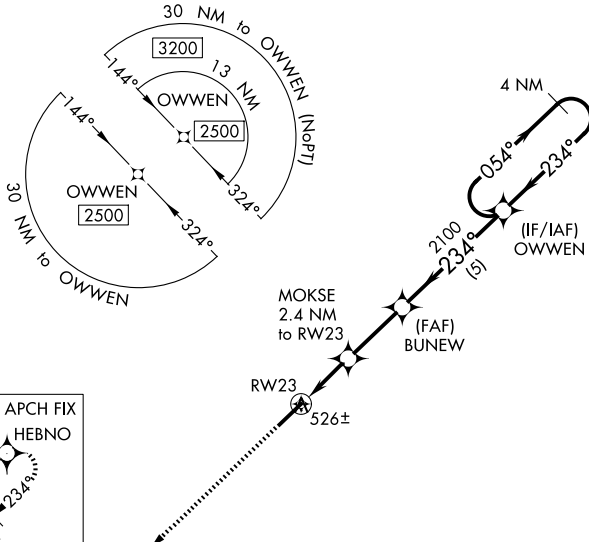
▼ Baro-VNAV NA when using Sanford altimeter setting. For uncompensated Baro-VNAV systems, LNAV/VNAV NA below -15°C or above 54°C. When local altimeter setting not received, use Sanford altimeter setting and increase all DA 88 feet and all MDA 100 feet; increase LNAV Cats C/D visibility $\frac{3}{8}$ mile and Circling Cat C visibility $\frac{1}{2}$ mile. Rwy 23 helicopter visibility reduction below $\frac{3}{4}$ SM NA.

MISSED APPROACH:
Climb to 2500 direct HEBNO and hold.

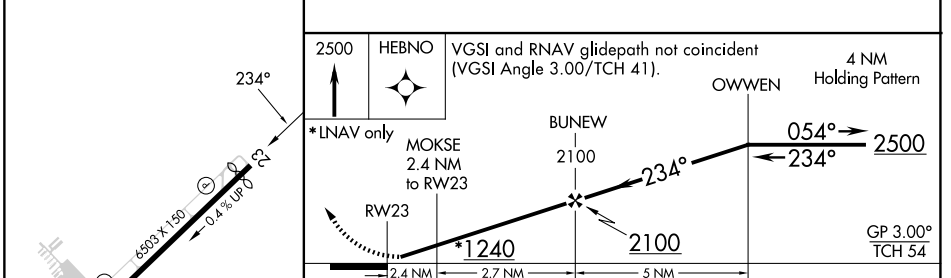
AWOS-3PT
127.575

FAYETTEVILLE APP CON
127.8 343.725

UNICOM
123.05(CTAF) 0



ELEV 459	D	TDZE 443
-----------------	----------	-----------------



CATEGORY	A	B	C	D
LPV DA		693-1	250 (300-1)	
LNAV/VNAV DA		699-1	256 (300-1)	
LNAV MDA		780-1	337 (400-1)	
CIRCLING	880-1 421 (500-1)	920-1 461 (500-1)	1100-1 $\frac{3}{4}$ 641 (700-1 $\frac{3}{4}$)	1360-3 901 (1000-3)

REIL Rwy 23 **0**
HIRL Rwy 5-23 **0**

SE-2, 14 MAY 2026 to 11 JUN 2026

SE-2, 14 MAY 2026 to 11 JUN 2026