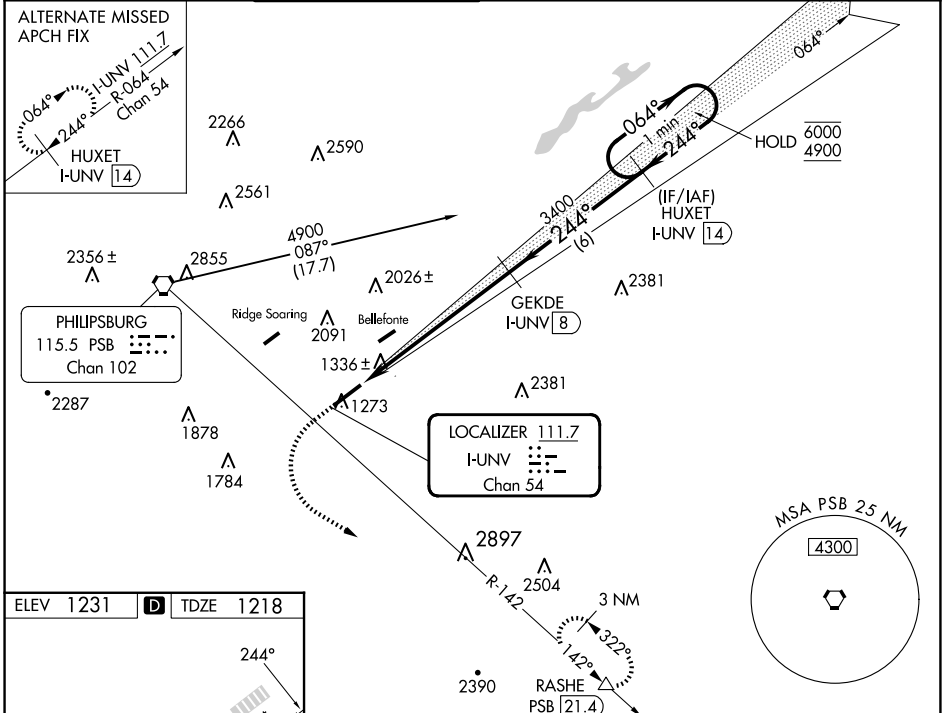


LOC/DME I-UNV 111.7 Chan 54	APP CRS 244°	Rwy Idg TDZE Apt Elev	6701 1218 1231
--	------------------------	-----------------------------	---

ILS or LOC RWY 24

STATE COLLEGE RGNL (UNV)

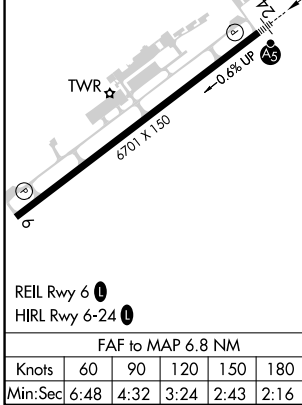
DME required.		MALSR		MISSED APPROACH: Climb to 2600, then climbing left turn to 4100 on heading 112°, and PSB VORTAC R-142 to RASHE/21.4 DME and hold.		
<p>⚠ Circling NA northwest of Rwy 6-24. * RVR 1800 authorized with use of FD or AP or HUD to DA (NA when using Clearfield altimeter setting).</p>						
D-ATIS 127.65	NEW YORK CENTER 134.8 338.3	UNIVERSITY PARK TOWER * 128.475 (CTAF) 0	GND CON 125.725	CLNC DEL 125.725	CLNC DEL 118.55 (When twr closed)	UNICOM 122.95



NE-4, 14 MAY 2026 to 11 JUN 2026

NE-4, 14 MAY 2026 to 11 JUN 2026

ELEV 1231	D	TDZE 1218
-----------	----------	-----------



	2600	4100	RASHE	HUXET I-UNV 14	One Minute Holding Pattern
	↑	hdg 112°	PSB R-142	GEKDE I-UNV 8	
					6000 4900
					GS 3.00° TCH 55
	1.2 NM	5.5 NM	6 NM		
CATEGORY	A	B	C	D	
S-ILS 24 *	1418/24				200 (200-½)
S-LOC 24	1640/24	422 (500-½)	1640/40	422 (500-¾)	
CIRCLING	1640-1 409 (500-1)	1700-1 469 (500-1)	1980-2¼ 749 (800-2¼)	2560-3 1329 (1400-3)	