

WAAS CH 61309 W24A	APP CRS 244°	Rwy Idg TDZE Apt Elev	6701 1218 1231
--	------------------------	-----------------------------	---


RNAV (GPS) RWY 24

STATE COLLEGE RGNL (UNV)

RNP APCH - GPS.

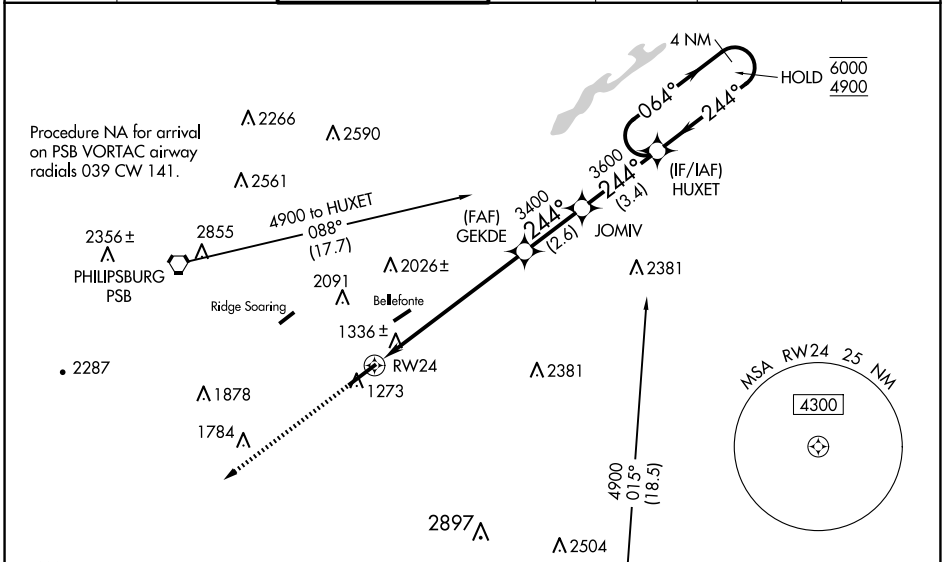
⚠ Circling NA northwest of Rwy 6-24. For uncompensated Baro-VNAV systems, LNAV/VNAV NA below -17°C or above 54°C.
 For inop ALS, increase LNAV/VNAV all Cats visibility to RVR 6000.
 *RVR 1800 authorized with use of FD or AP or HUD to DA (NA when using Clearfield altimeter setting)

MALSR



MISSED APPROACH:
 Climb to 4400 direct HIMAB and hold, continue climb-in-hold to 4400.

D-ATIS 127.65	NEW YORK CENTER 134.8 338.3	UNIVERSITY PARK TOWER ★ 128.475 (CTAF) 0	GND CON 125.725	CLNC DEL 125.725	CLNC DEL 118.55 (When twr closed)	UNICOM 122.95
-------------------------	---------------------------------------	---	---------------------------	----------------------------	--	-------------------------



NE-4, 14 MAY 2026 to 11 JUN 2026

NE-4, 14 MAY 2026 to 11 JUN 2026

HIMAB 064° 244° 5 NM

HUXET 4 NM Holding Pattern

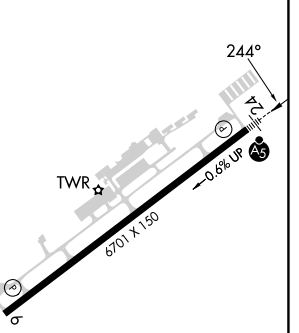
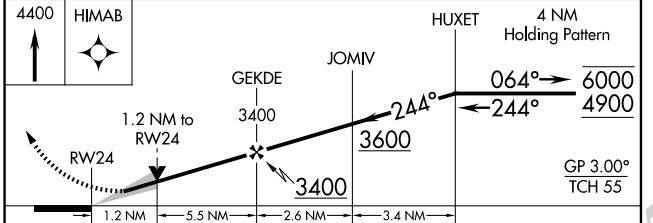
RWY 24 1.2 NM to RWY 24

GEKDE 3400

JOMIV 3600

RASHE 2390

ELEV 1231	D	TDZE 1218
-----------	----------	-----------



CATEGORY	A	B	C	D
LPV DA*		1418/24	200 (200-½)	
LNAV/VNAV DA		1619/40	401 (400-¾)	
LNAV MDA	1640/24	422 (500-½)	1640/40	422 (500-¾)
CIRCLING	1640-1 409 (500-1)	1700-1 469 (500-1)	1980-2¼ 749 (800-2¼)	2560-3 1329 (1400-3)

REIL Rwy 6 **0**

HIRL Rwy 6-24 **0**