

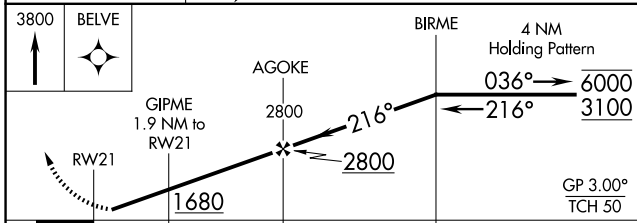
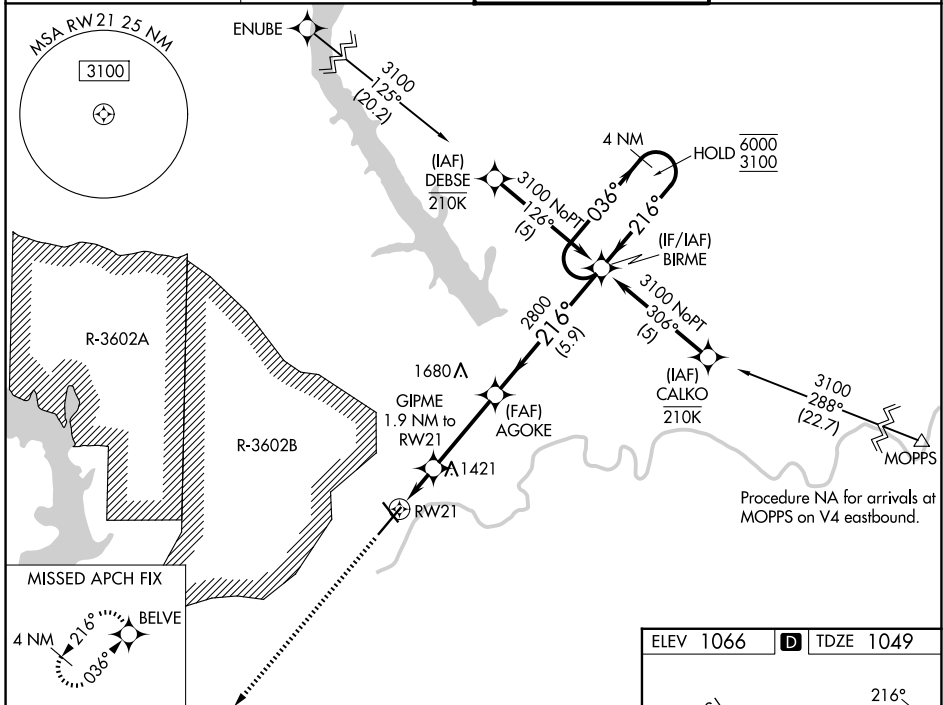
WAAS CH 53319 W21A	APP CRS 216°	Rwy Ldg TDZE Apt Elev	7030 1049 1066
--	------------------------	-----------------------------	---

RNAV (GPS) RWY 21

MANHATTAN RGNL (MHK)

RNP APCH - GPS.	<p>⚠ Circling NA northwest of Rwy 3-21. Rwy 21 helicopter visibility reduction below $\frac{3}{4}$ SM NA. For uncompensated Baro-VNAV systems, LNAV/VNAV NA below -20°C or above 54°C.</p>	MISSED APPROACH: Climb to 3800 direct BELVE and hold.
-----------------	--	---

ASOS 119.075	MARSHALL AAF GCA* 121.25 269.05	MANHATTAN TOWER* 118.55 (CTAF) 0	GND CON 121.85
------------------------	---	--	--------------------------



CATEGORY	A	B	C	D
LPV DA	1249- $\frac{3}{4}$ 200 (200- $\frac{3}{4}$)			
LNAV/VNAV DA	1634-1 $\frac{3}{4}$ 585 (600-1 $\frac{3}{4}$)			
LNAV MDA	1660-1 611 (600-1)	1660-1 $\frac{3}{4}$ 611 (600-1 $\frac{3}{4}$)		
CIRCLING	1660-1 594 (600-1)	1920-2 $\frac{1}{2}$ 854 (900-2 $\frac{1}{2}$)	1920-2 $\frac{3}{4}$ 854 (900-2 $\frac{3}{4}$)	



- HIRL Rwy 3-21
- MIRL Rwy 13-31
- REIL Rwy 21 and 31

NC-2, 14 MAY 2026 to 11 JUN 2026

NC-2, 14 MAY 2026 to 11 JUN 2026