

(NICQE1.NICQE) 26134

AL-5243 (FAA-O)

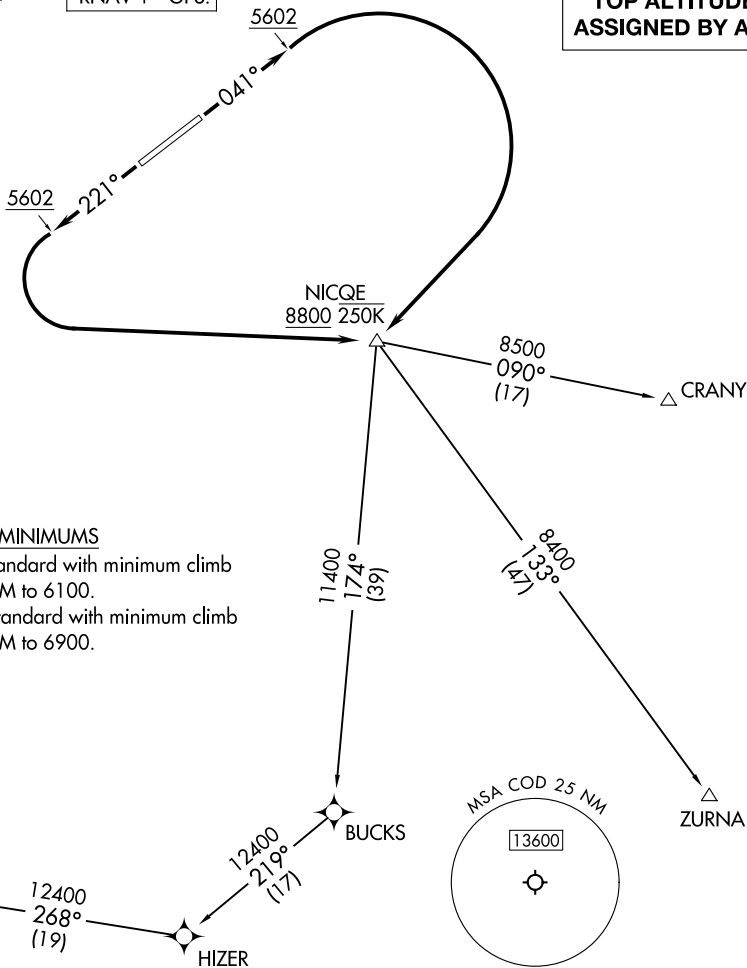
YELLOWSTONE RGNL (COD)  
CODY, WYOMING

# NICQE ONE DEPARTURE (RNAV)

SALT LAKE CENTER  
127.75 351.9  
AWOS-3PT  
135.075  
CTAF  
122.8

RNAV 1 - GPS.

**TOP ALTITUDE:  
ASSIGNED BY ATC**



### TAKEOFF MINIMUMS

Rwy 4: Standard with minimum climb of 210'/NM to 6100.

Rwy 22: Standard with minimum climb of 402'/NM to 6900.

NOTE: Chart not to scale.

### DEPARTURE ROUTE DESCRIPTION

TAKEOFF RUNWAY 4: Climb on heading 041° to 5602, then climbing right turn direct NICQE to cross NICQE at or above 8800 and at or below 250K, thence . . .

TAKEOFF RUNWAY 22: Climb on heading 221° to 5602, then climbing left turn direct NICQE to cross NICQE at or above 8800 and at or below 250K, thence . . .  
. . . on transition, maintain ATC assigned altitude.

CRANY TRANSITION (NICQE1.CRANY)

NEEDS TRANSITION (NICQE1.NEEDS)

ZURNA TRANSITION (NICQE1.ZURNA)

# NICQE ONE DEPARTURE (RNAV)

(NICQE1.NICQE) 14MAY26

CODY, WYOMING  
YELLOWSTONE RGNL (COD)

NW-1, 14 MAY 2026 to 11 JUN 2026

NW-1, 14 MAY 2026 to 11 JUN 2026