

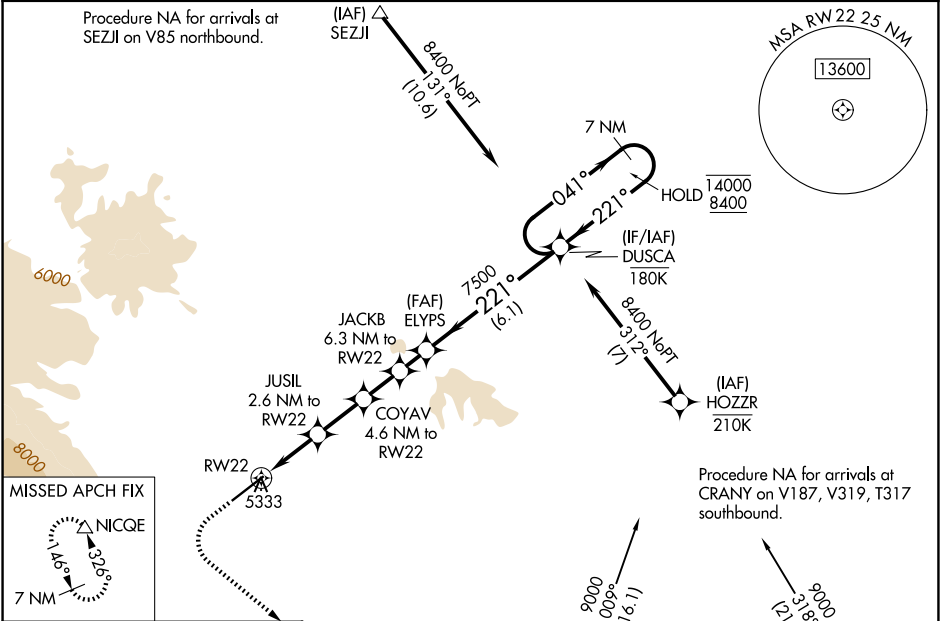
WAAS CH 90543 W22A	APP CRS 221°	Rwy Ldg TDZE Apt Elev	7178 5076 5102
--	------------------------	-----------------------------	---

RNAV (GPS) RWY 22

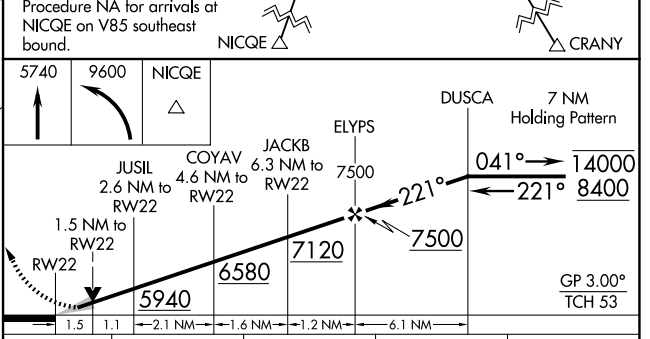
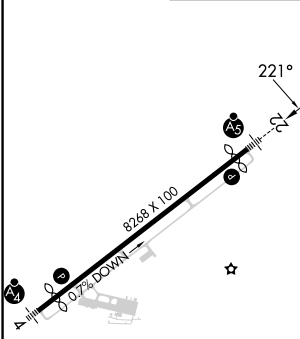
YELLOWSTONE RGNL (COD)

RNP APCH - GPS.	MALSR	MISSED APPROACH: (Do not exceed 185K until NICQE) Climb to 5740 then climbing left turn to 9600 direct NICQE and hold, continue climb-in-hold to 9600.
<p>For inop ALS, increase LPV all Cats visibility to 1 SM.</p> <p> -9°C</p>		

AWOS-3PT 135.075	SALT LAKE CENTER 127.75 351.9	UNICOM 122.8 (CTAF)
----------------------------	---	-------------------------------



ELEV 5102	D	TDZE 5076
-----------	----------	-----------



CATEGORY	A	B	C	D
LPV DA	5400-1/2		324 (300-1/2)	
LNAV MDA	5600-1/2	524 (500-1/2)	5600-1	524 (500-1)
CIRCLING	5780-1 678 (700-1)	5900-1 798 (800-1)	5940-2 1/2 838 (900-2 1/2)	7000-3 1898 (1900-3)

- HIRL Rwy 4-22
- REIL Rwy 22
- REIL Rwy 4

NW-1, 14 MAY 2026 to 11 JUN 2026

NW-1, 14 MAY 2026 to 11 JUN 2026