

LOC I-HSP 108.7	APP CRS 247°	Rwy Ldg 5600 TDZE 3773 Apt Elev 3793
---------------------------	------------------------	---

ILS or LOC RWY 25

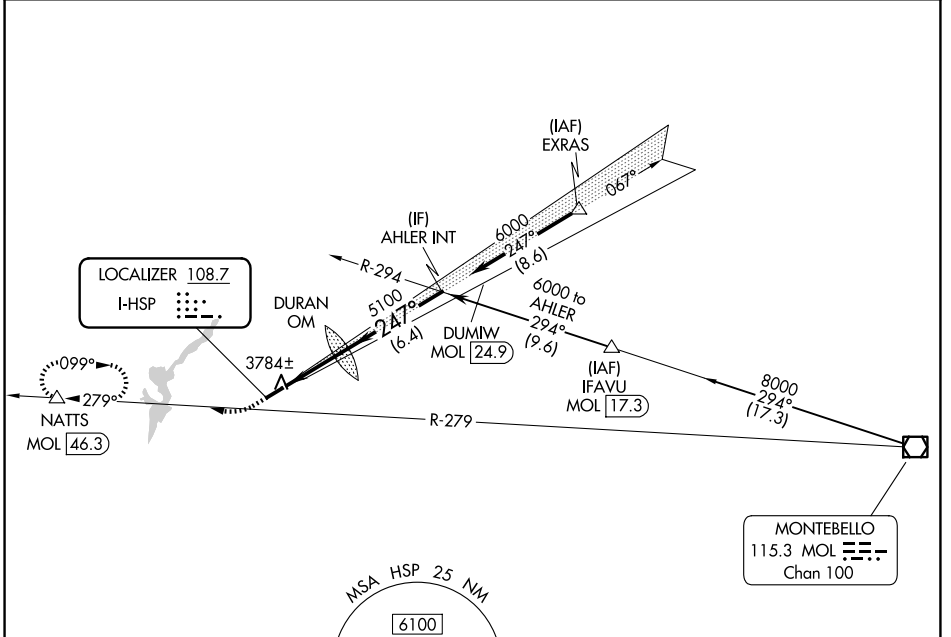
INGALLS FLD (HSP)

DME required.

▼ Circling to Rwy 7 NA at night.
▲ NA Circling NA southeast of Rwy 7-25.

MISSED APPROACH: Climb to 4360, then climbing right turn to 6200 on heading 270° and MOL R-279 to NATTS/MOL 46.3 DME and hold. (DME required).

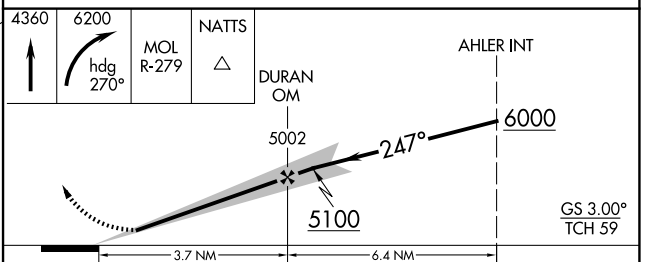
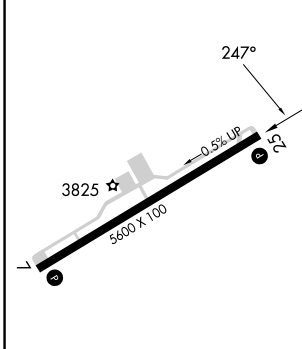
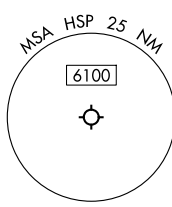
AWOS-3 118.8	WASHINGTON CENTER 134.4 353.9	UNICOM 123.0 (CTAF) 0
------------------------	---	---------------------------------



NE-3, 14 MAY 2026 to 11 JUN 2026

NE-3, 14 MAY 2026 to 11 JUN 2026

ELEV 3793	TDZE 3773
-----------	-----------



REIL Rwy 25 0				
HIRL Rwy 7-25 0				
FAF to MAP 3.7 NM				
Knots	60	90	120	150
Min:Sec	3:42	2:28	1:51	1:29
CATEGORY	A	B	C	D
S-ILS 25	4073- ⁷ / ₈		300 (300- ⁷ / ₈)	
S-LOC 25	4240-1	467 (500-1)	4240-1 ³ / ₈	467 (500-1 ³ / ₈)
CIRCLING	4440-1 647 (700-1)	4480-1 687 (700-1)	4480-2 687 (700-2)	4480-2 ¹ / ₄ 687 (700-2 ¹ / ₄)