

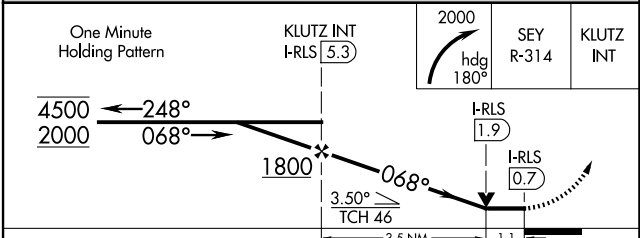
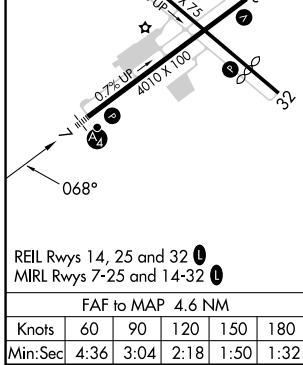
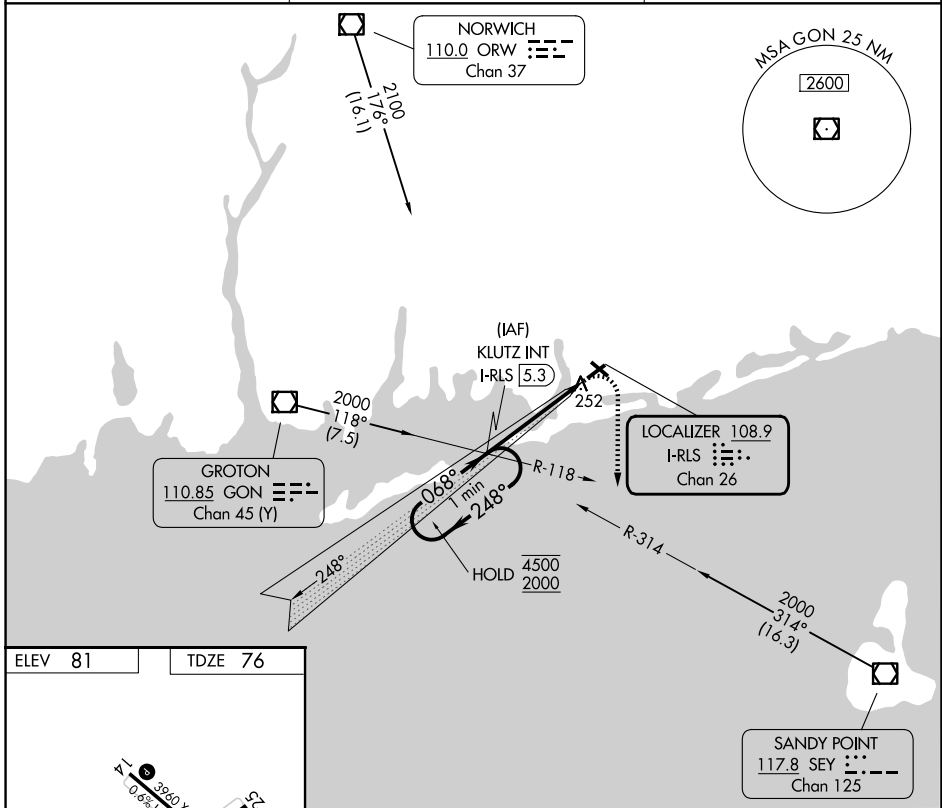
LOC/DME I-RLS <b>108.9</b> Chan 26	APP CRS <b>068°</b>	Rwy Ldg TDZE Apt Elev	<b>4010</b> <b>76</b> <b>81</b>
--	------------------------	-----------------------------	---------------------------------------

# LOC RWY 7

WESTERLY STATE (WST)

<p><b>NA</b> Circling to Rwy 14 and 32 NA at night. Rwy 7 helicopter visibility reduction below ¼ SM NA. Inop table does not apply.</p>	<p><b>MALSF</b></p>	<p><b>MISSED APPROACH:</b> Climbing right turn to 2000 on heading 180° and SEY R-314 to KLUTZ INT/I-RLS 5.3 DME and hold, continue climb-in-hold to 2000.</p>
---	---------------------	---

ASOS <b>132.375</b>	PROVIDENCE APP CON * <b>119.45 319.2</b>	UNICOM <b>123.0 (CTAF) 0</b>
------------------------	---	---------------------------------



CATEGORY	A	B	C	D
S-7	520-1	444 (500-1)	520-1¾	444 (500-1¾)
CIRCLING	580-1	499 (500-1)	720-2 639 (700-2)	760-2¼ 679 (700-2¼)

NE-1, 14 MAY 2026 to 11 JUN 2026

NE-1, 14 MAY 2026 to 11 JUN 2026