

LOC/DME I-SFZ	APP CRS	Rwy Ldg	5000
111.9	047°	TDZE	429
Chan 56		Apt Elev	441

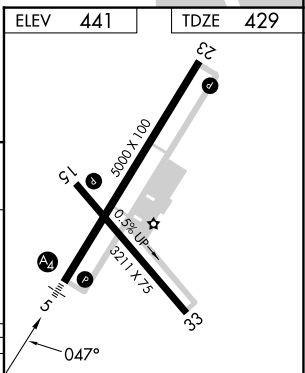
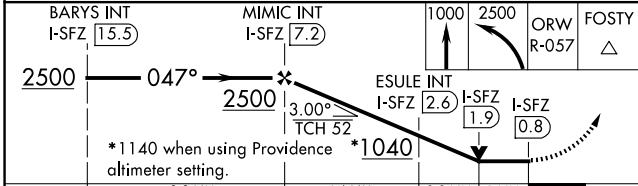
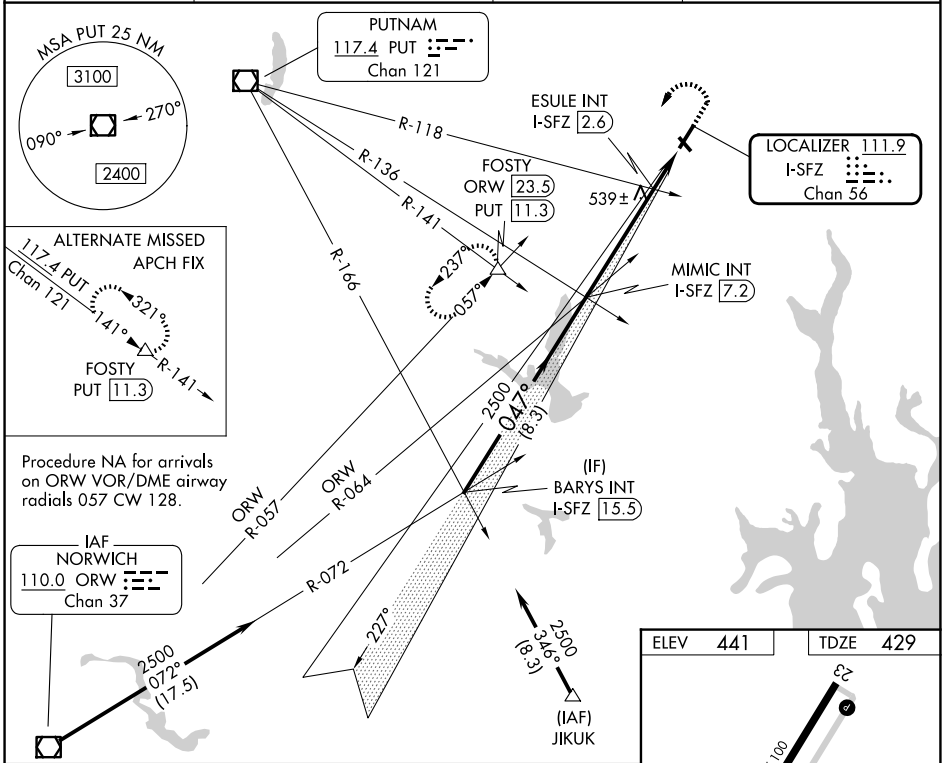
LOC RWY 5

NORTH CENTRAL STATE (SF/Z)

NA Circling Rwy 15, 33 NA at night. VDP NA with Providence altimeter setting. When local altimeter setting not received, use Providence altimeter setting and increase all MDA 100 feet; increase S-5 Cat C and Circling Cat C visibility ¼ mile, and ESULE fix minimums S-5 Cat C visibility ¼ mile.

MALS MISSED APPROACH: Climb to 1000 then climbing left turn to 2500 on ORW VOR/DME R-057 to FOSTY INT/ ORW 23.5 DME and hold.

AWOS-3PT 120.775	PROVIDENCE APP CON ★ 123.675 244.875	CLNC DEL 124.35	UNICOM 123.075 (CTAF) 0
---------------------	---	--------------------	----------------------------



CATEGORY	A		B	C		D
	1040-¾	611 (600-¾)		1040-1½	611 (600-1½)	
S-5	1040-¾	611 (600-¾)	1040-1½	611 (600-1½)	NA	
CIRCLING	1040-1	599 (600-1)	1040-1¾	599 (600-1¾)	NA	
ESULE FIX MINIMUMS (DUAL VOR RECEIVERS OR DME REQUIRED)						
S-5	800-¾	371 (400-¾)	800-⅞	371 (400-⅞)	NA	
CIRCLING	900-1	459 (500-1)	900-1½	459 (500-1½)	NA	

ELEV	441	TDZE	429
FAF to MAP 6.4 NM			
Knots	60	90	120 150 180
Min:Sec	6:24	4:16	3:12 2:34 2:08

LOC RWY 5

NE-1, 14 MAY 2026 to 11 JUN 2026

NE-1, 14 MAY 2026 to 11 JUN 2026

HIRL Rwy 5-23 0
MIRL Rwy 15-33 0
REIL Rws 15, 23 and 33 0