

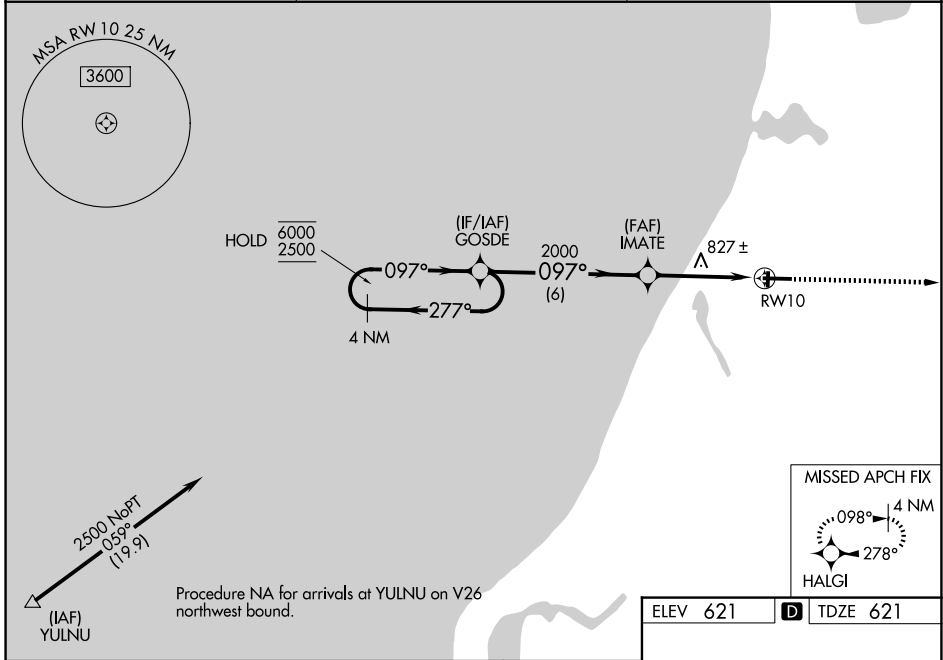
WAAS CH 60933 W10A	APP CRS 097°	Rwy Ldg 5501 TDZE 621 Apt Elev 621
--	------------------------	---

RNAV (GPS) RWY 10

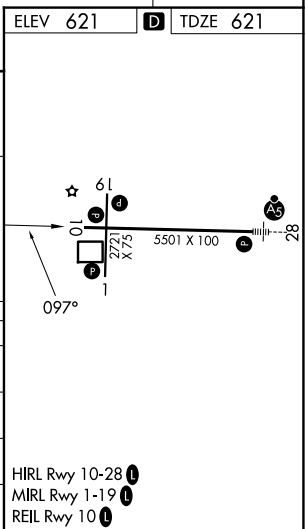
MANISTEE COUNTY/BLACKER (MBL)

RNP APCH - GPS.		MISSED APPROACH: Climb to 3000 direct HALGI and hold.
<p>⚠ Circling Rwy 1, 19 NA at night. Rwy 10 helicopter visibility reduction below $\frac{3}{4}$ SM NA. For uncompensated Baro-VNAV systems, LNAV/VNAV NA below -16°C or above 54°C.</p>		

AWOS-3PT 118.825	MINNEAPOLIS CENTER 120.85 322.35	UNICOM 122.8 (CTAF) Ⓛ
----------------------------	--	--



4 NM Holding Pattern		VGSI and RNAV glidepath not coincident (VGSI Angle 3.00/TCH 30).		3000	HALGI
GOSDE		IMATE		RWY 10	
6000	2500	2000	1.4 NM to RWY 10	RWY 10	
GP 3.00° TCH 53		2000		097°	
6 NM		2.8 NM		1.4 NM	
CATEGORY	A	B	C	D	
LPV DA	890- $\frac{7}{8}$		269 (300- $\frac{7}{8}$)		
LNAV/VNAV DA	1091-1 $\frac{3}{8}$		470 (500-1 $\frac{3}{8}$)		
LNAV MDA	1080-1	459 (500-1)		1080-1 $\frac{3}{8}$	459 (500-1 $\frac{3}{8}$)
CIRCLING	1160-1 539 (600-1)	1220-1 599 (600-1)	1400-2 $\frac{1}{4}$ 779 (800-2 $\frac{1}{4}$)	1500-2 $\frac{3}{4}$ 879 (900-2 $\frac{3}{4}$)	



EC-1, 14 MAY 2026 to 11 JUN 2026

EC-1, 14 MAY 2026 to 11 JUN 2026