

APP CRS	Rwy Ldg	5756
164°	TDZE	1327
	Apt Elev	1356

RNAV (GPS) RWY 16

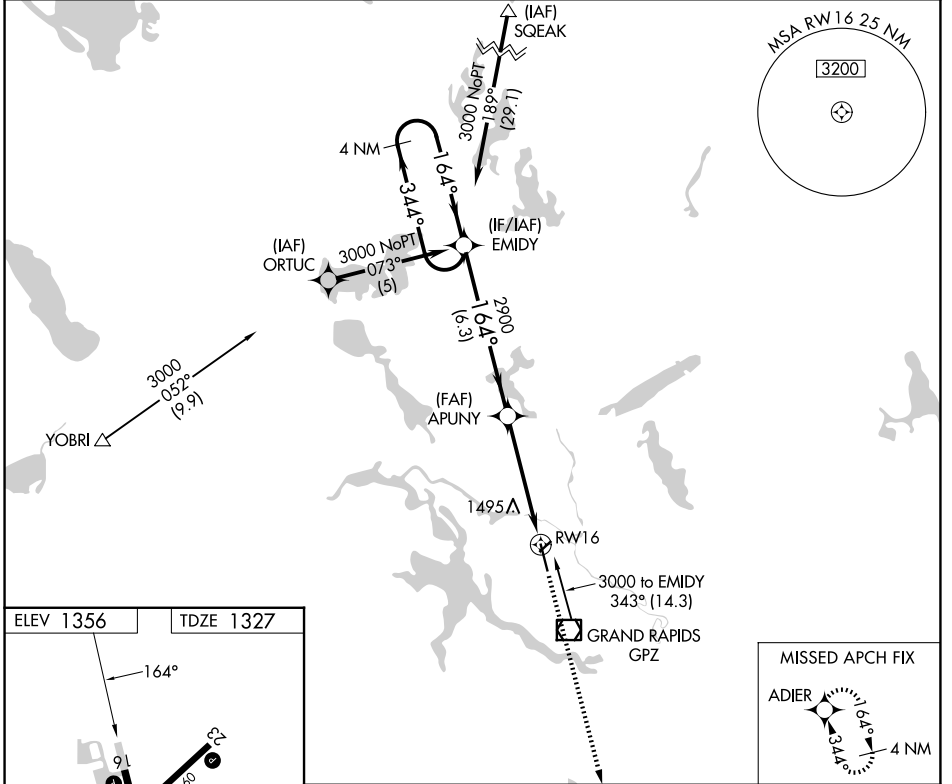
GRAND RAPIDS/ITASCA COUNTY-GORDON NEWSTROM FLD (GPZ)

RNP APCH.

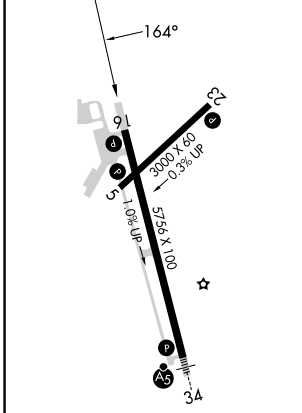
⚠ Circling Rwy 5 NA at night. Circling NA for Cat D east of Rwy 16-34.
⚠ When local altimeter setting not received, use Hibbing altimeter setting and increase all MDAs 80 feet, increase LNAV Cat C visibility 1/8 SM and Circling Cats C/D visibility 1/4 SM.

MISSED APPROACH: Climb to 2900 direct ADIER and hold.

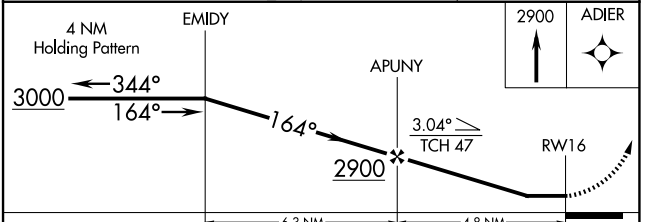
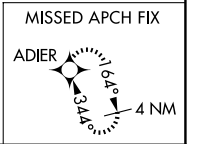
AWOS-3PT 118.425	MINNEAPOLIS CENTER 127.9 281.45	UNICOM 122.8 (CTAF) 0
----------------------------	---	---------------------------------



ELEV 1356	TDZE 1327
-----------	-----------



MIRL Rwy 5-23 **⚠**
 HIRL Rwy 16-34 **⚠**
 REIL Rws 5, 16, and 23 **⚠**



CATEGORY	A	B	C	D
LNAV MDA	1760-1	433 (500-1)	1760-1¼ 433 (500-1¼)	1760-1½ 433 (500-1½)
CIRCLING	1900-1	544 (600-1)	1900-1½ 544 (600-1½)	2000-2 644 (700-2)

RNAV (GPS) RWY 16

NC-1, 14 MAY 2026 to 11 JUN 2026

NC-1, 14 MAY 2026 to 11 JUN 2026