

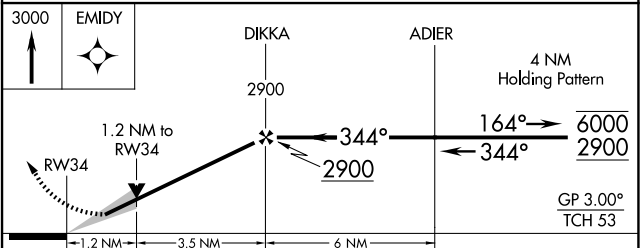
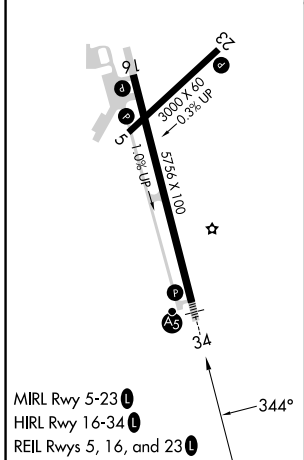
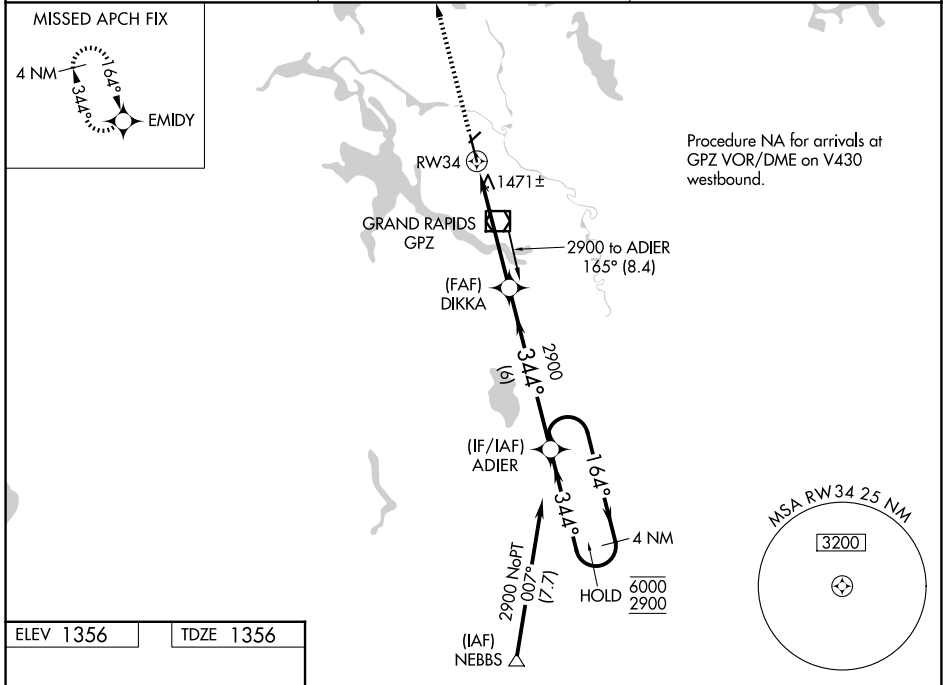
WAAS CH <b>86412</b> <b>W34A</b>	APP CRS <b>344°</b>	Rwy Ldg TDZE Apt Elev	<b>5756</b> <b>1356</b> <b>1356</b>
--	------------------------	-----------------------------	---

# RNAV (GPS) RWY 34

GRAND RAPIDS/ITASCA COUNTY-GORDON NEWSTROM FLD (GPZ)

RNP APCH.	MALSR	MISSED APPROACH: Climb to 3000 direct EMIDY and hold.
<p>▼ Circling to Rwy 5, 23 NA at night. Circling NA for Cat D east of Rwy 16-34.</p> <p>▲ For uncompensated Baro-VNAV systems, LNAV/VNAV NA below -17°C or above 54°C.</p>		

AWOS-3PT <b>118.425</b>	MINNEAPOLIS CENTER <b>127.9 281.45</b>	UNICOM <b>122.8 (CTAF) 0</b>
----------------------------	---	---------------------------------



CATEGORY	A	B	C	D
LPV DA	1556-1/2		200 (200-1/2)	
LNAV/VNAV DA	1747-5/8		391 (400-5/8)	
LNAV MDA	1800-1/2	444 (500-1/2)	1800-7/8	444 (500-7/8)
CIRCLING	1900-1	544 (600-1)	1900-1 1/2 544 (600-1 1/2)	1960-2 604 (700-2)

# RNAV (GPS) RWY 34

NC-1, 14 MAY 2026 to 11 JUN 2026

NC-1, 14 MAY 2026 to 11 JUN 2026