

|  |                        |   |
|--|------------------------|---|
| WAAS<br>CH <b>99606</b><br><b>W25A</b> | APP CRS<br><b>249°</b> | Rwy Ldg <b>5350</b><br>TDZE <b>958</b><br>Apt Elev <b>958</b> |
|--|------------------------|---|

# RNAV (GPS) RWY 25

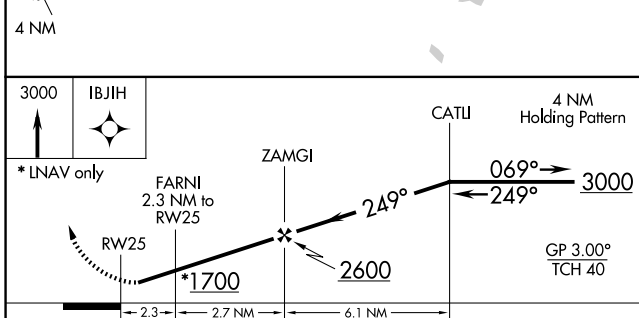
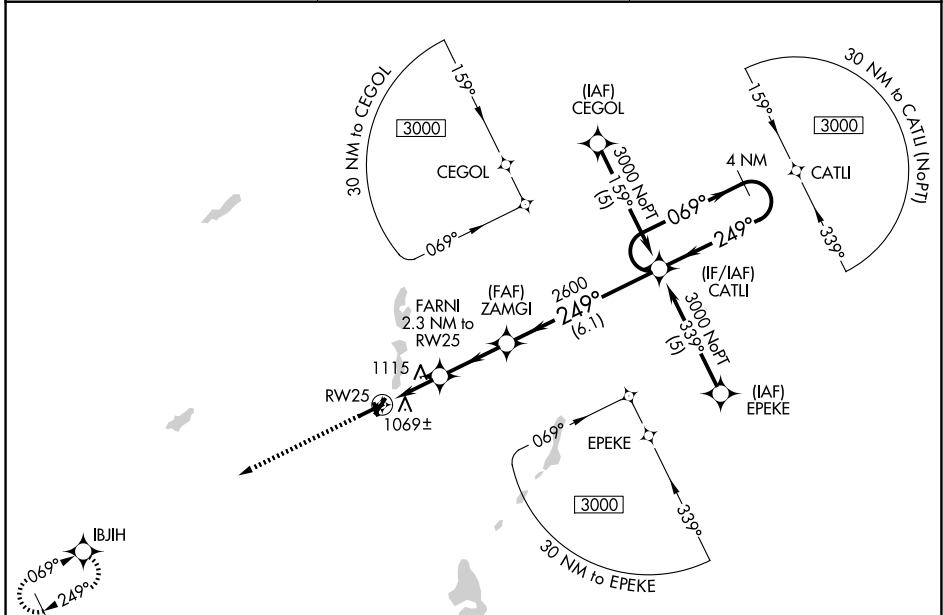
BRANCH COUNTY MEML (OEB)

RNP APCH

Rwy 25 helicopter visibility reduction below 1 SM NA. When local altimeter setting not received, use Sturgis altimeter setting and increase all DAs 48 feet and LPV visibility 1/4 mile all Cats and all MDAs 60 feet and LNAV Cat C visibility 1/4 mile. Baro-VNAV NA when using Sturgis altimeter setting. For uncompensated Baro-VNAV systems, LNAV/VNAV NA below -16°C or above 54°C. Circling NA to Rwy 16 and 34.

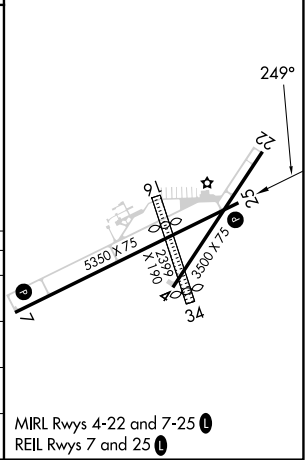
MISSED APPROACH:  
Climb to 3000 direct  
IBJIH and hold.

|                           |  |                                 |
|---------------------------|--|---------------------------------|
| AWOS-3P<br><b>118.125</b> | GREAT LAKES APP CON *<br><b>121.2 239.25</b> | UNICOM<br><b>122.7 (CTAF) 0</b> |
|---------------------------|--|---------------------------------|



|          |          |
|----------|----------|
| ELEV 958 | TDZE 958 |
|----------|----------|

| CATEGORY     | A                     | B                     | C                       | D  |
|--------------|-----------------------|-----------------------|-------------------------|----|
| LPV DA       | 1305-1¼               | 347 (400-1¼)          |                         | NA |
| LNAV/VNAV DA | 1423-1¾               | 465 (500-1¾)          |                         | NA |
| LNAV MDA     | 1420-1                | 462 (500-1)           | 1420-1¼<br>462 (500-1¼) | NA |
| CIRCLING     | 1420-1<br>462 (500-1) | 1440-1<br>482 (500-1) | 1560-1¾<br>602 (700-1¾) | NA |



EC-1, 14 MAY 2026 to 11 JUN 2026

EC-1, 14 MAY 2026 to 11 JUN 2026