

WAAS CH 56506 W07A	APP CRS 069°	Rwy Ldg TDZE Apt Elev	5350 958 958
--	------------------------	-----------------------------	---

RNAV (GPS) RWY 7

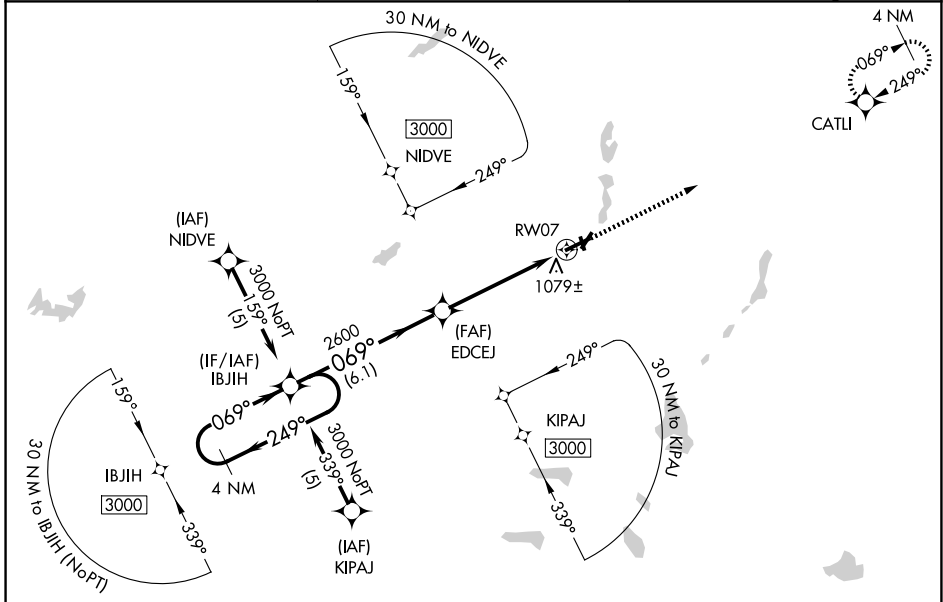
BRANCH COUNTY MEML (OEB)

RNP APCH.

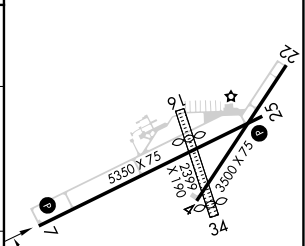
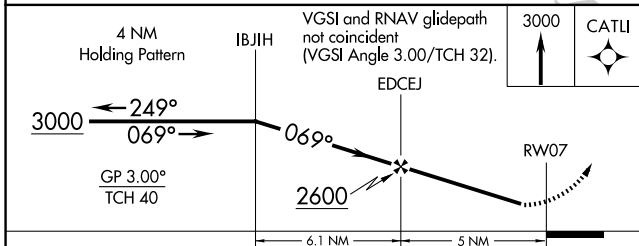
⚠ Rwy 7 helicopter visibility reduction below 3/4 SM NA. Baro-VNAV NA when using Sturgis altimeter setting. For uncompensated Baro-VNAV systems, LNAV/VNAV NA below -1.6°C or above 54°C. Circling NA to Rwy 16 and 34. When local altimeter setting not received, use Sturgis altimeter setting and increase all DAs 48 feet and LPV visibility 1/4 mile all Cats and all MDAs 60 feet and LNAV Cat C visibility 1/4 mile.

⚠ MISSED APPROACH: Climb to 3000 direct CATLI and hold.

AWOS-3P 118.125	GREAT LAKES APP CON * 121.2 239.25	UNICOM 122.7 (CTAF) 0
---------------------------	--	---------------------------------



ELEV 958	TDZE 958
----------	----------



CATEGORY	A	B	C	D
LPV DA	1306-1 1/4	348 (400-1 1/4)		NA
LNAV/VNAV DA	1417-1 3/4	459 (500-1 3/4)		NA
LNAV MDA	1420-1	462 (500-1)	1420-1 1/4 462 (500-1 1/4)	NA
CIRCLING	1420-1 462 (500-1)	1440-1 482 (500-1)	1560-1 3/4 602 (700-1 3/4)	NA

MIRL Rwy 4-22 and 7-25 0
REIL Rwy 7 and 25 0

EC-1, 14 MAY 2026 to 11 JUN 2026

EC-1, 14 MAY 2026 to 11 JUN 2026