

WAAS CH <b>56505</b> <b>W01A</b>	APP CRS <b>004°</b>	Rwy Ldg TDZE Apt Elev	<b>6501</b> <b>760</b> <b>772</b>
--	------------------------	-----------------------------	---

# RNAV (GPS) RWY 1

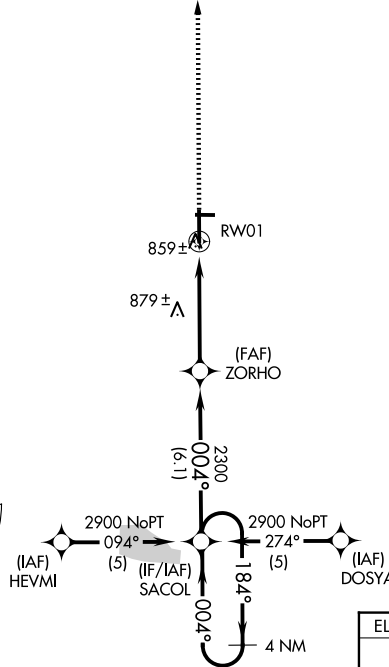
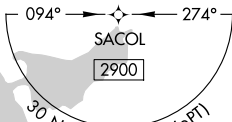
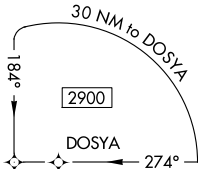
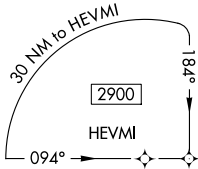
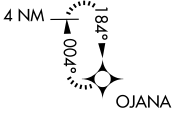
FREMONT MUNI (F'FX)

**▼** Baro-VNAV NA when using Muskegon altimeter setting. For uncompensated Baro-VNAV systems, LNAV/VNAV NA below -16°C (4°F) or above 47°C (116°F). Rwy 1 helicopter visibility reduction below ¾ SM NA. DME/DME RNP-0.3 NA. When local altimeter setting not received, use Muskegon altimeter setting and increase all DA 65 feet, and all visibilities ¼ mile. Increase all MDA 80 feet, and Cat C/D visibilities ¼ mile. VDP NA when using Muskegon altimeter setting.

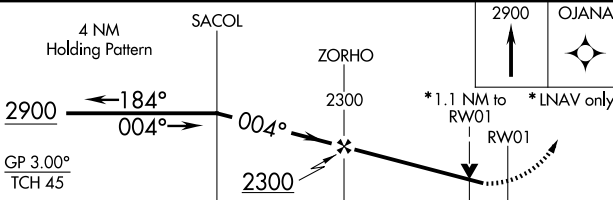
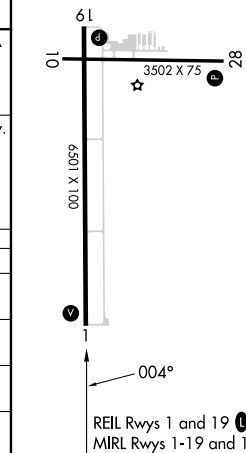
**MISSED APPROACH:**  
Climb to 2900 direct OJANA and hold.

AWOS-3P <b>118.775</b>	GREAT LAKES APP CON * <b>119.8 290.35</b>	CLNC DEL <b>118.25</b>	UNICOM <b>123.0 (CTAF) 0</b>
---------------------------	--	---------------------------	---------------------------------

MISSED APCH FIX



ELEV <b>772</b>	TDZE <b>760</b>
-----------------	-----------------



CATEGORY	A	B	C	D
LPV DA	1036-1		276 (300-1)	
LNAV/ VNAV DA	1129-1¼		369 (400-1¼)	
LNAV MDA	1140-1		380 (400-1)	
CIRCLING	1260-1		488 (500-1)	
			1460-2	
			688 (700-2)	
			1460-1¼	
			380 (400-1¼)	
			1460-2¼	
			688 (700-2¼)	

EC-1, 14 MAY 2026 to 11 JUN 2026

EC-1, 14 MAY 2026 to 11 JUN 2026