

WAAS CH 82405 W19A	APP CRS 184°	Rwy Ldg TDZE Apt Elev	6501 769 772
--	------------------------	-----------------------------	---

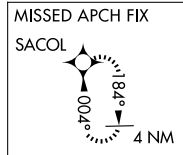
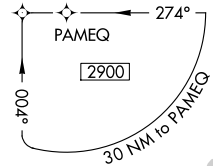
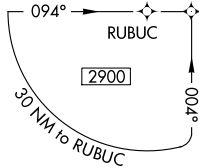
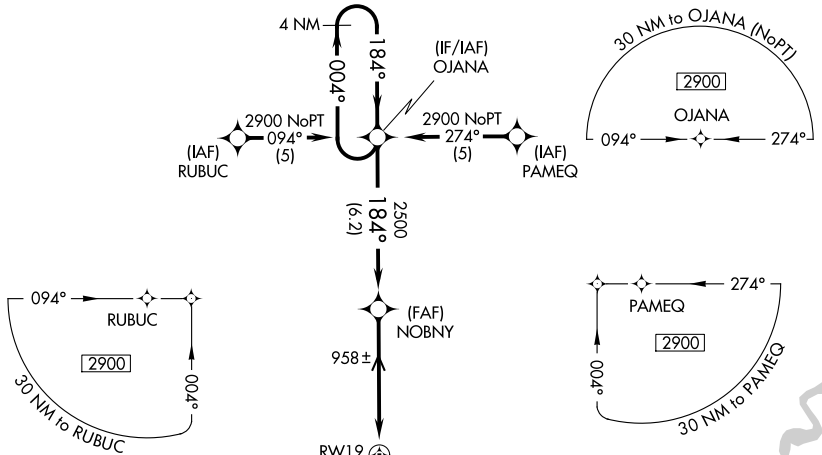
RNAV (GPS) RWY 19

FREMONT MUNI (F'FX)

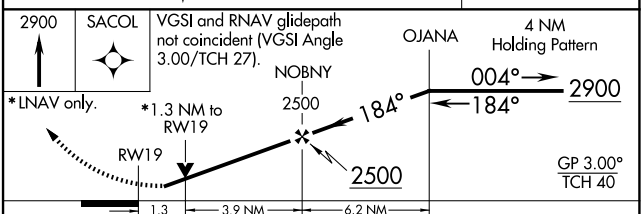
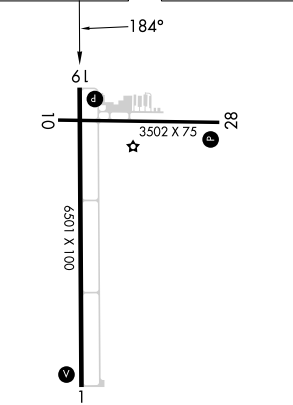
V **A** Baro-VNAV NA when using Muskegon altimeter setting. For uncompensated Baro-VNAV systems, LNAV/VNAV NA below -16°C (4°F) or above 47°C (116°F). Rwy 19 helicopter visibility reduction below 3/4 SM NA. DME/DME RNP-0.3 NA. When local altimeter setting not received, use Muskegon altimeter setting and increase all DA 65 feet, and all visibilities 1/4 mile. Increase all MDA 80 feet, and Cat C/D visibilities 1/4 mile. VDP NA when using Muskegon altimeter setting.

MISSED APPROACH:
Climb to 2900 direct SACOL and hold.

AWOS-3P 118.775	GREAT LAKES APP CON ★ 119.8 290.35	CLNC DEL 118.25	UNICOM 123.0 (CTAF) 0
---------------------------	--	---------------------------	--



ELEV 772	TDZE 769
----------	----------



CATEGORY	A	B	C	D
LPV DA		1074-1	305 (400-1)	
LNAV/VNAV DA		1295-2	526 (600-2)	
LNAV MDA	1220-1	451 (500-1)	1220-1 1/4 451 (500-1 1/4)	1220-1 1/2 451 (500-1 1/2)
CIRCLING	1260-1	488 (500-1)	1460-2 688 (700-2)	1460-2 1/4 688 (700-2 1/4)

REIL Rwy 1 and 19 **0**
MIRL Rwy 1-19 and 10-28 **0**

EC-1, 14 MAY 2026 to 11 JUN 2026

EC-1, 14 MAY 2026 to 11 JUN 2026