

WAAS CH 61005 W21A	APP CRS 207°	Rwy Ldg TDZE Apt Elev	5008 980 996
--	------------------------	-----------------------------	---

RNAV (GPS) RWY 21

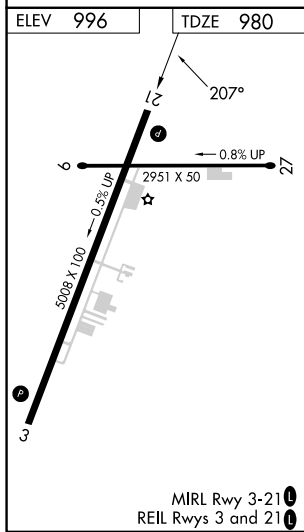
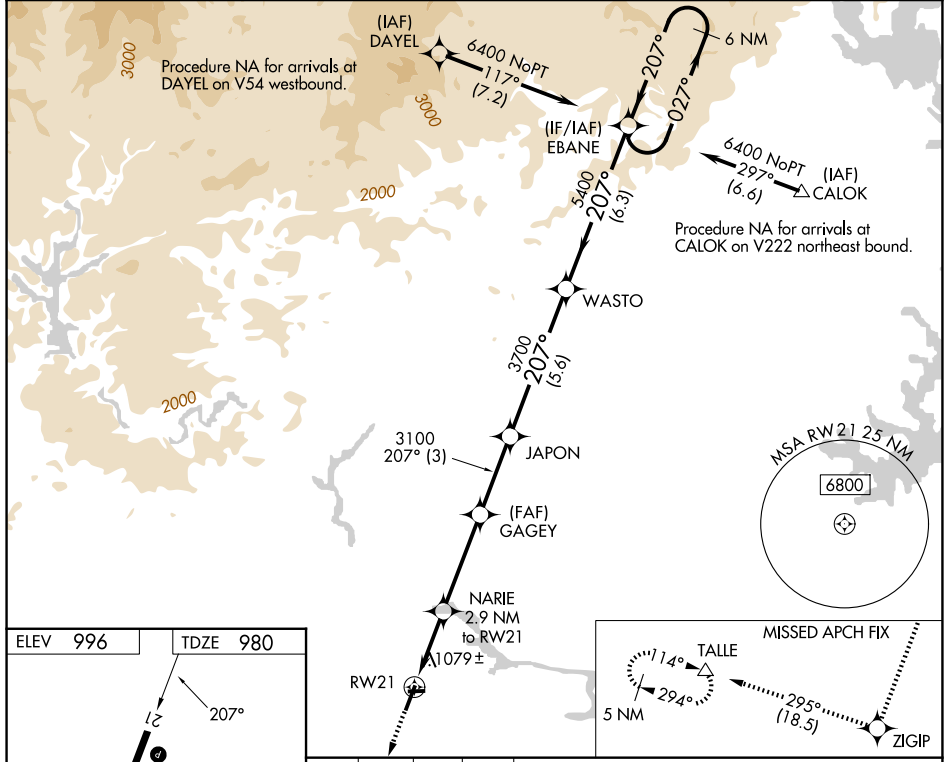
TOCCOA RG LETOURNEAU FLD (TOC)

RNP APCH

Baro-VNAV and VDP NA when using Gainesville altimeter setting. For uncompensated Baro-VNAV systems, LNAV/VNAV NA below -8°C or above 54°C. When local altimeter setting not received, use Gainesville altimeter setting: Increase LPV DA to 1345 feet, LNAV/VNAV DA to 1510 feet, and increase all MDAs 120 feet, increase LNAV/LNAV visibility all Cats 1/2 SM, LNAV visibility Cats C/D 3/8 SM and Circling visibility Cats A/B 1/4 SM and Cat C 1/2 SM. Circling Rwy 9, 27 NA at night.

MISSED APPROACH:
Climb to 5800 direct ZIGIP and on track 295° to TALLE and hold, continue climb-in-hold to 5800.

AWOS-3 119.625	ATLANTA CENTER 134.8 379.95	UNICOM 122.8 (CTAF) 0
--------------------------	---------------------------------------	---------------------------------



ELEV 996	TDZE 980								
5800	ZIGIP	TALLE	* LNAV only		EBANE		6 NM Holding Pattern		
	tr 295°	△	JAPON	WASTO	EBANE		6400		
	*1.8 NM to RW21	NARIE 2.9 NM to RW21	GAGEY 3100	3700	5400	207°		207°	GP 3.00° TCH 33
	1.8	1.1	3.7	3	5.6	6.3			
CATEGORY	A		B		C		D		
LPV DA	1230-1		250 (300-1)						
LNAV/VNAV DA	1395-1 1/8		415 (400-1 1/8)						
LNAV MDA	1560-1		580 (600-1)		1560-1 3/8		580 (600-1 3/8)		
CIRCLING	1720-1		724 (800-1)		1760-2 1/4		2480-3		
					764 (800-2 1/4)		1484 (1500-3)		

SE-4, 14 MAY 2026 to 11 JUN 2026

SE-4, 14 MAY 2026 to 11 JUN 2026